

RAB5C PAB

Rab5C Polyclonal Antibody

Cat. #: 21038

Gene Symbol: RAB5C

Description: Anti-Rab5C Rabbit Polyclonal Antibody

Background: Rab5, consists of three isoforms, Rab5A, Rab5B, and Rab5C, is a small GTPase that is localized to early endosomes. It regulates the fusion between endocytic vesicles and early endosomes, as well as the homotypic fusion between early endosomes.

Immunogen: A synthetic peptide from Rab5C

Applications: ELISA, WB, IHC

Recommended Dilutions: ELISA 1:100–1:5000

WB 1:100–1:1000

IHC 1:100–1000

Concentration: 0.2 mg/ml

Host Species: Rabbit

Format: Liquid

Clonality: Polyclonal

Isotype: IgG

Purity: Purified from serum

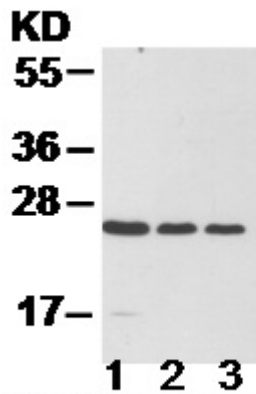
Preservative: No

Constituents: PBS (without Mg^{2+} and Ca^{2+}), pH 7.4, 150 mM NaCl, 50% glycerol

Species Reactivity: Rab5C antibody recognizes Rab5C from vertebrates.

Storage Conditions: Store at $-20^{\circ}C$. Avoid repeated freezing and thawing

Western blot:



WB: anti-Rab5C pAb

EC-1 (lane 1), HEK-293T (lane 2) and MEF (lane 3) cell lysates were used for Western blot with anti Rab5C polyclonal antibody (cat # 21038).