

**RAB6A PAB****Rab6A****Cat. #:** 21068**Gene Symbol:** RAB6A**Description:** Anti-Rab6A Rabbit Polyclonal Antibody

**Background:** The small GTPase Rab6 regulates vesicle trafficking at the level of Golgi. There are three forms of Rab6: Rab6A, Rab6A' (also called Rab6C) and Rab6B. Rab6A and Rab6C are splice variants of the same gene. Rab6A is localized in the Golgi and regulates a COPI-independent pathway of retrograde membrane transport from the Golgi complex to the endoplasmic reticulum.

**Immunogen:** A synthetic peptide from the internal region of human Rab6A protein

**Applications:** ELISA, WB, IHC**Recommended Dilutions:** ELISA 1:100–1:5000

WB 1:100–1:1000

IHC 1:100–1:1000

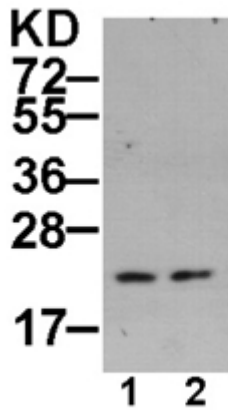
**Concentration:** 0.2 mg/ml**Host Species:** Rabbit**Format:** Liquid**Clonality:** Polyclonal**Isotype:** IgG**Purity:** Purified from serum**Preservative:** No

**Constituents:** PBS (without  $Mg^{2+}$  and  $Ca^{2+}$ ), pH 7.4, 150 mM NaCl, 50% glycerol

**Species Reactivity:** Rab6A antibody recognizes Rab6A proteins from vertebrates.

**Storage Conditions:** Store at  $-20^{\circ}C$ . Avoid repeated freezing and thawing

## Western blot:



## WB: anti-Rab6A pAb

HEK-293T (lane 1) and MEF (lane 2) whole-cell extracts were used for Western blot with anti Rab6A polyclonal antibody (cat # 21068).