

## RAB7-GTP

### Anti-Rab7GTP Mouse Monoclonal Antibody

**Cat. #:** 26923

**Size:** 30  $\mu$ L

**Gene Symbol:** RAB7

**Description:** Anti-Rab7-GTP Mouse Monoclonal Antibody

**Background:** Rab7 belongs to the Rab family of small GTPases. Rab7 is located in the late endosome, lysosome, cytoplasmic vesicle, phagosome and melanosome. It is involved in the late endocytic transport and contributes to the maturation of phagosomes.

**Immunogen:** Recombinant full length protein of active Rab7

**Applications:** IP, IHC and IF (**Not applicable for WB since SDS denatures Rab7 GTPase**)

**Recommended Dilutions:**

IP: 1  $\mu$ g for 1~2 mg total cellular proteins

IHC, IF: 1:50-1:250

**Concentration:** 1 mg/ml

**Host Species:** Mouse

**Format:** Liquid

**Clonality:** Monoclonal

**Isotype:** IgG

**Purity:** Purified from ascites

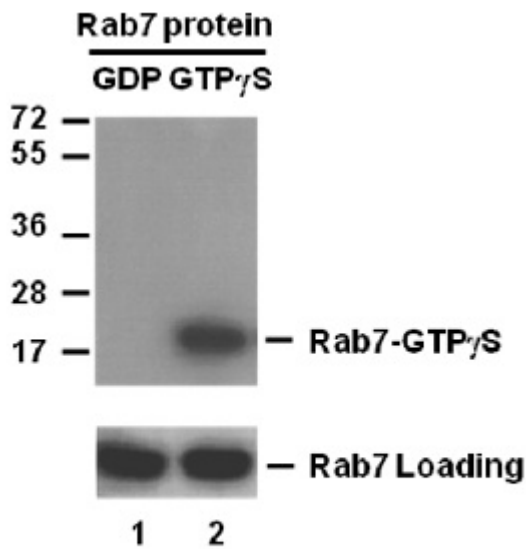
**Preservative:** No

**Constituents:** PBS (without  $Mg^{2+}$  and  $Ca^{2+}$ ), pH 7.4, 150 mM NaCl, 50% glycerol

**Species Reactivity:** Anti-Rab7-GTP monoclonal antibody recognizes active Rab7 proteins of vertebrates.

**Storage Conditions:** Store at  $-20^{\circ}C$ . Avoid repeated freezing and thawing

## Immunoprecipitation/Western blot:



**IP:** anti-active Rab7 mAb

**IB:** anti-Rab7 pAb

### Rab7 Activation Assay.

Purified full-length Rab7 proteins were immunoprecipitated after treated with GDP (lane 1) or GTP $\gamma$ S (lane 2). Immunoprecipitation was done with the anti-Rab7-GTP monoclonal antibody (Cat. No. 26923). Immunoblot was with an anti-Rab7 polyclonal antibody (Cat. No. 2 069).