

**RAB8A PAB****Rab8A Polyclonal Antibody****Cat. #:** 21071**Gene Symbol:** RAB8A**Description:** Anti-Rab8A Rabbit Polyclonal Antibody**Background:** Rab8A is involved in polarized trafficking of vesicles from the trans-Golgi network, and is the only RAB-family protein identified in mammalian cilia.**Immunogen:** A synthetic peptide from the N-terminal region of human Rab8A**Applications:** ELISA, WB, IHC**Recommended Dilutions:**

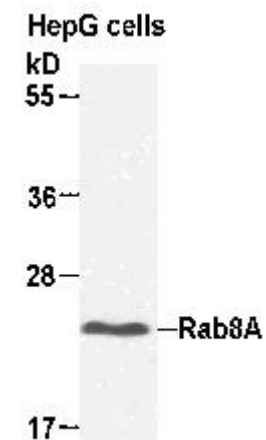
ELISA: 1:100–1:5000

WB: 1:100–1:2000

IHC: 1:100–1:1000

**Concentration:** 0.2 mg/ml**Host Species:** Rabbit**Format:** Liquid**Clonality:** Polyclonal**Purity:** Purified from serum**Preservative:** No**Constituents:** PBS (without  $Mg^{2+}$  and  $Ca^{2+}$ ), pH 7.4, 150 mM NaCl, 50% glycerol**Species Reactivity:** Rab2A antibody recognizes Rab2A from vertebrates.**Storage Conditions:** Store at  $-20^{\circ}C$ . Avoid repeated freezing and thawing

## Western blot:



WB: anti-Rab8A pAb

HepG cell lysate was used for Western blot with anti Rab8A polyclonal antibody (cat # 21071).