

RAB9A PAB**Rab9A Polyclonal Antibody****Cat. #:** 21073**Gene Symbol:** RAB9A**Description:** Anti-Rab9A Rabbit Polyclonal Antibody**Background:** Ras-related protein Rab-9A mediates late endosome to trans-Golgi transport. Recently Rab9 has been implicated as a key cellular component for human HIV, Ebola, Marburg, and measles virus replication.**Immunogen:** A synthetic peptide from the C-terminal of human Rab9A protein**Applications:** ELISA, WB, IHC, IP**Recommended Dilutions:**

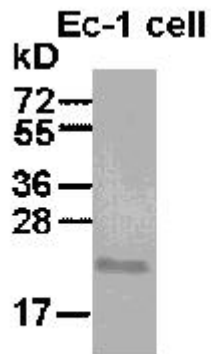
ELISA: 1:100–1:5000

WB: 1:100–1:1000

IHC: 1:50–1:100

Concentration: 0.2 mg/ml**Host Species:** Rabbit**Format:** Liquid**Clonality:** Polyclonal**Isotype:** IgG**Purity:** Purified from serum**Preservative:** No**Constituents:** PBS (without Mg^{2+} and Ca^{2+}), pH 7.4, 150 mM NaCl, 50% glycerol**Species Reactivity:** Rab9A antibody recognizes Rab9A proteins from vertebrates.**Storage Conditions:** Store at -20°C . Avoid repeated freezing and thawing

Western blot:



Wb: anti-Rab9A pAb

EC-1 whole-cell lysate was used for Western blot with anti Rab9A polyclonal antibody (cat # 21073).