

RAC1 PAB**Rac1 Polyclonal Antibody****Cat. #:** 21003**Gene Symbol:** RAC1**Description:** Anti-Rac1 Rabbit Polyclonal Antibody

Background: Small GTPases are a super-family of cellular signaling regulators. Rac belongs to the Rho sub-family of GTPases that regulate cell motility, cell division, and gene transcription. GTP binding increases the activity of Rac, and the hydrolysis of GTP to GDP renders it inactive. GTP hydrolysis is aided by GTPase activating proteins (GAPs), while exchange of GDP for GTP is facilitated by guanine nucleotide exchange factors (GEFs).

Immunogen: A synthetic peptide from a unique region of Rac1

Applications: ELISA, WB, IHC

Recommended Dilutions: ELISA 1:100–1:5000, WB 1:100–1:2000

Concentration: 1 mg/ml

Host Species: Rabbit

Format: Liquid

Clonality: Polyclonal

Isotype: IgG

Purity: Purified from serum

Preservative: No

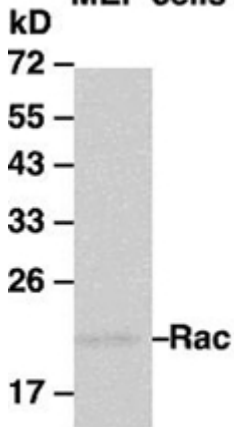
Constituents: PBS ((without Mg^{2+} and Ca^{2+}), pH 7.4, 150 mM NaCl, 50% glycerol)

Species Reactivity: Rac1 antibody recognizes Rac1 from vertebrates.

Storage Conditions: Store at $-20^{\circ}C$. Avoid repeated freezing and thawing

Western blot:

MEF cells



WB: anti-Rac pAb

Western blot analysis of Rac1 proteins. MEF whole-cell lysate was used for western blots with the polyclonal anti Rac1 antibody (cat # 21003).