

RAC2 PAB

Rac2 Polyclonal Antibody

Cat. #: 21027

Gene Symbol: RAC2

Description: Anti-Rac2 Rabbit Polyclonal Antibody

Background: Small GTPases are a super-family of cellular signaling regulators. Rac belongs to the Rho sub-family of GTPases that regulate cell motility, cell division, and gene transcription. GTP binding increases the activity of Rac, and the hydrolysis of GTP to GDP renders it inactive. GTP hydrolysis is aided by GTPase activating proteins (GAPs), while exchange of GDP for GTP is facilitated by guanine nucleotide exchange factors (GEFs).

Immunogen: A synthetic peptide from the C-terminus of Ras

Applications: ELISA, WB, IHC

Recommended Dilutions: ELISA 1:100–1:5000

WB 1:100–1:2000

IHC 1:100–1:1000

Concentration: 0.2 mg/ml

Host Species: Rabbit

Format: Liquid

Clonality: Polyclonal

Isotype: IgG

Purity: Purified from serum

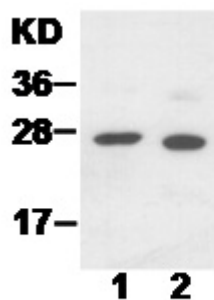
Preservative: No

Constituents: PBS (without Mg^{2+} and Ca^{2+}), pH 7.4, 150 mM NaCl, 50% glycerol

Species Reactivity: Rac2 antibody recognizes Rac2 from vertebrates.

Storage Conditions: Store at $-20^{\circ}C$. Avoid repeated freezing and thawing

Western blot:



WB: anti-Rac2 pAb

Western blot analysis of Rac2 proteins. HepG2 (lane 1) and EC-1 (lane 2) whole-cell lysates were used for Western blots with the polyclonal anti Rac2 antibody (cat # 21027).