

RAL-GTP

Anti-RalGTP Mouse Monoclonal Antibody

Cat. #: 26913

Size: 30 μ L

Gene Symbol: Ral

Description: Anti-Ral-GTP Mouse Monoclonal Antibody

Background: The Ras-like small G proteins, RalA and RalB, are important components of Ras signaling pathways, implicated in the initiation and maintenance of tumorigenic transformation, as well as vesicle transport, apoptosis, transcription, cell migration, and cell proliferation.

Immunogen: Recombinant full length protein of active RalB.

Applications: IP, IHC and IF (**Not applicable for WB since SDS denatures Ral GTPase**)

Published Applications: [IP, IHC and IF - Click for Details](#)

Recommended Dilutions:

IP: 1 μ g for 1~2 mg total cellular proteins

IHC, IF: 1:50-1:250

Concentration: 1 mg/ml

Host Species: Mouse

Format: Liquid

Clonality: Monoclonal

Isotype: IgG

Purity: Purified from ascites

Preservative: No

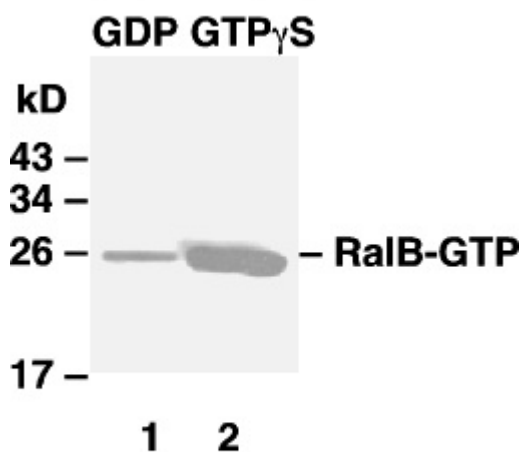
Constituents: PBS (without Mg^{2+} and Ca^{2+}), pH 7.4, 150 mM NaCl, 50% glycerol

Species Reactivity: Anti-Ral-GTP monoclonal antibody recognizes active RalA and RalB of vertebrates.

Storage Conditions: Store at $-20^{\circ}C$. Avoid repeated freezing and thawing

Immunoprecipitation/Western blot:

RalB protein



IP: anti-active Ral mAb

WB: anti-RalB pAb

Ral activation assay.

Purified RalB proteins were immunoprecipitated after treated with GDP (lane 1) or GTP γ S (lane 2). Immunoprecipitation was done with the anti-Ral-GTP monoclonal antibody (Cat. No. 26913). Immunoblot was with an anti-RalB rabbit polyclonal antibody (Cat. No. 21033).