

RAL PAB**Ral Polyclonal Antibody****Cat. #:** 21150**Gene Symbol:** RAL**Description:** Anti-Ral Rabbit Polyclonal Antibody**Background:** The Ras-like small G proteins, RalA/B, are important components of Ras signaling pathways, implicated in the initiation and maintenance of tumorigenic transformation, as well as vesicle transport, apoptosis, transcription, cell migration, and cell proliferation.**Immunogen:** Two synthetic peptides from the internal regions of RalA and RalB proteins.**Applications:** ELISA, WB, IHC, IP**Recommended Dilutions:**

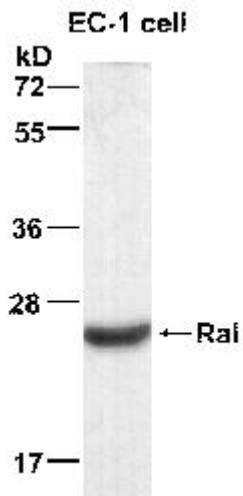
ELISA: 1:100–1:5000

WB: 1:100–1:2000

IHC: 1:100–1:1000

Concentration: 0.2 mg/ml**Host Species:** Rabbit**Format:** Liquid**Clonality:** Polyclonal**Isotype:** IgG**Purity:** Purified from serum**Preservative:** No**Constituents:** PBS (without Mg^{2+} and Ca^{2+}), pH 7.4, 150 mM NaCl, 50% glycerol**Species Reactivity:** Ral antibody recognizes RalA and RalB from vertebrates.**Storage Conditions:** Store at -20°C . Avoid repeated freezing and thawing

Western blot:



WB: anti-Rai pAb

EC-1 cell lysate was used for Western blot with anti RalA polyclonal antibody (cat # 21150).