

RALA PAB

RaIA Polyclonal Antibody

Cat. #: 21034

Gene Symbol: RALA

Description: Anti-RaIA Rabbit Polyclonal Antibody

Background: The Ras-like small G proteins, RaIA/B, are important components of Ras signaling pathways, implicated in the initiation and maintenance of tumorigenic transformation, as well as vesicle transport, apoptosis, transcription, cell migration, and cell proliferation.

Immunogen: A synthetic peptide from the internal region of RaIA protein

Applications: ELISA, WB, IHC

Recommended Dilutions: ELISA 1:100–1:5000

WB 1:100–1:2000

IHC 1:100–1:1000

Concentration: 0.2 mg/ml

Host Species: Rabbit

Format: Liquid

Clonality: Polyclonal

Isotype: IgG

Purity: Purified from serum

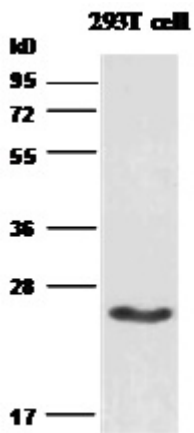
Preservative: No

Constituents: PBS (without Mg^{2+} and Ca^{2+}), pH 7.4, 150 mM NaCl, 50% glycerol

Species Reactivity: RaIA antibody recognizes RaIA from vertebrates.

Storage Conditions: Store at $-20^{\circ}C$. Avoid repeated freezing and thawing

Western blot:



WB: anti-RalA pAb

Western blot analysis of RalA proteins. HEK-293T cell lysate was used for Western blot with anti RalA polyclonal antibody (cat # 21034).