

## RAN MAB

### Ran Monoclonal Antibody

**Cat. #:** 26020

**Gene Symbol:** RAN

**Description:** Anti-Ran-Mouse Monoclonal Antibody

**Background:** Ran (Ras-related nuclear protein) is a member of the Ras-superfamily GTPases. Ran is involved in the transport of proteins across the nuclear envelope, as well as in microtubule organization during mitosis.

**Immunogen:** Recombinant full length protein of Ran

**Applications:** ELISA, WB, IP, IHC

**Recommended Dilutions:** ELISA: 1:1000-1:5000

WB: 1:100-1:2000

IP: 1 µg for 1~2 mg total cellular proteins

IHC: 1:100 dilution

**Concentration:** 1 mg/ml

**Host Species:** Mouse

**Format:** Liquid

**Clonality:** Monoclonal

**Isotype:** IgG

**Purity:** Purified from ascites

**Preservative:** No

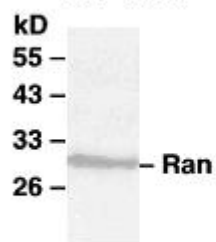
**Constituents:** PBS (without Mg<sup>2+</sup> and Ca<sup>2+</sup>), pH 7.4, 150 mM NaCl, 50% glycerol

**Species Reactivity:** Anti-Ran antibody recognizes Ran of vertebrates.

**Storage Conditions:** Store at -20°C. Avoid repeated freezing and thawing

### Western blot:

**Western blot:**  
MEF cells



WB: anti-Ran mAb

Western blot analysis of Ran proteins. Whole-cell lysate of MEF cells was used for western blots with the monoclonal anti-Ran antibody (cat. # 26020).