

RAN PAB

Ran Polyclonal Antibody

Cat. #: 21097

Gene Symbol: RAN

Description: Anti-Ran Rabbit Polyclonal Antibody

Background: Ran (Ras-related nuclear protein) is a member of the Ras-superfamily GTPases. Ran is involved in the transport of proteins across the nuclear envelope, as well as in microtubule organization during mitosis.

Immunogen: A synthetic peptide from the C-terminal region of human Ran

Applications: ELISA, WB, IHC

Recommended Dilutions: ELISA 1:100–1:5000

WB 1:100–1:2000

IHC 1:100–1:1000

Concentration: 0.2 mg/ml

Host Species: Rabbit

Format: Liquid

Clonality: Polyclonal

Isotype: IgG

Purity: Purified from serum

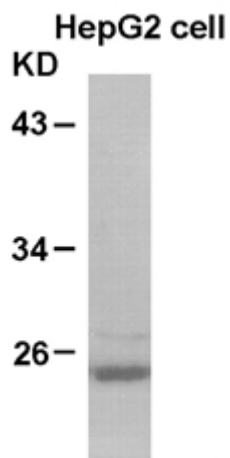
Preservative: No

Constituents: PBS (without Mg^{2+} and Ca^{2+}), pH 7.4, 150 mM NaCl, 50% glycerol

Species Reactivity: Anti-Ran antibody recognizes Ran of vertebrates.

Storage Conditions: Store at $-20^{\circ}C$. Avoid repeated freezing and thawing

Western blot:



WB: anti-Ran pAb

Western blot analysis of Ran proteins. Whole-cell lysate of HepG2 cells was used for western blots with the polyclonal anti Ran antibody (Cat # 21097).