

RAP1-GTP**Anti-Rap1GTP Mouse Monoclonal Antibody****Cat. #:** 26912**Size:** 30 µL**Gene Symbol:** RAPI**Description:** Anti-Rap1-GTP Mouse Monoclonal Antibody

Background: Small GTPases are a super-family of cellular signaling regulators. Rap family members (Rap1A, Rap1B, Rap2A, Rap2B, and Rap2C) are Ras-like GTPases that regulate cell proliferation, differentiation, apoptosis and adhesion mechanisms. Rap1 (Ras-proximate-1) regulates apoptosis through interaction with two MAP3K effectors of the MEK/ERK MAP-kinase pathway, Raf-1 and B-Raf. Rap1 regulates cell adhesion mechanisms through effector molecules such as the integrins and cadherins.

Immunogen: Recombinant full length protein of active Rap1.

Applications: IP, IHC and IF (**Not applicable for SDS since WB denatures Rap1 GTPase**)

Published Applications: [IP, IHC and IF - Click for Details](#)

Recommended Dilutions:

IP: 1 µg for 1~2 mg total cellular proteins

IHC, IF: 1:50-1:250

Concentration: 1 mg/ml**Host Species:** Mouse**Format:** Liquid**Clonality:** Monoclonal**Isotype:** IgG**Purity:** Purified from ascites**Preservative:** No

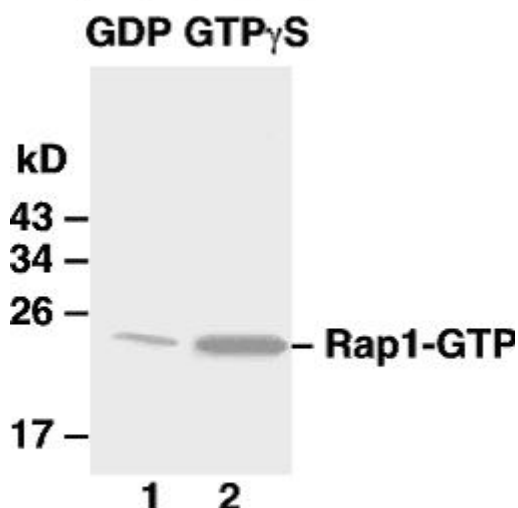
Constituents: PBS (without Mg^{2+} and Ca^{2+}), pH 7.4, 150 mM NaCl, 50% glycerol

Species Reactivity: Anti-Rap1-GTP monoclonal antibody recognizes active Rap1 of vertebrates.

Storage Conditions: Store at -20°C. Avoid repeated freezing and thawing

Immunoprecipitation/Western blot:

Rap1 protein



IP: anti-active Rap1 mAb

WB: anti-Rap1 pAb

Rap1 Activation Assay.

Purified Rap1 proteins were immunoprecipitated after treated with GDP (lane 1) or GTP γ S (lane 2). Immunoprecipitation was done with the anti-Rap1-GTP monoclonal antibody (Cat. No. 26912). Immunoblot was with an anti-Rap1 polyclonal antibody (Cat. No. 21104).