

**RAS-GTP****Anti-RasGTP Mouse Monoclonal Antibody****Cat. #:** 26909**Size:** 30 µL**Gene Symbol:** RAS**Description:** Anti-Ras-GTP Mouse Monoclonal Antibody

**Background:** Small GTPases are a super-family of cellular signaling regulators. Ras belongs to the Ras sub-family of GTPases that regulate cell proliferation, cell motility, and gene transcription. GTP binding increases the activity of Ras, and the hydrolysis of GTP to GDP renders it inactive. GTP hydrolysis is aided by GTPase activating proteins (GAPs), while exchange of GDP for GTP is facilitated by guanine nucleotide exchange factors (GEFs).

**Immunogen:** Recombinant full length protein of active H-Ras

**Applications:** IP, IHC and IF (**Not applicable for SDS since WB denatures Ras GTPase**)

**Recommended Dilutions:**

IP: 1 µg for 1~2 mg total cellular proteins

IHC, IF: 1:50–1:250

**Concentration:** 1 mg/ml**Host Species:** Mouse**Format:** Liquid**Clonality:** Monoclonal**Isotype:** IgG**Purity:** Purified from ascites**Preservative:** No

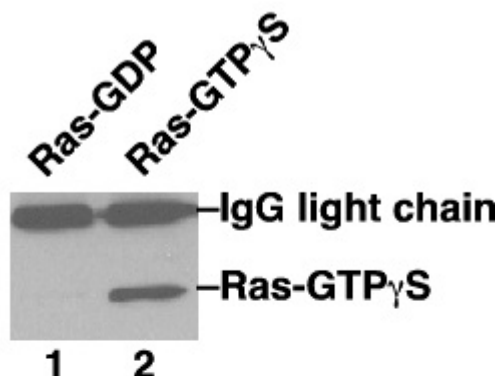
**Constituents:** PBS (without  $Mg^{2+}$  and  $Ca^{2+}$ ), pH 7.4, 150 mM NaCl, 50% glycerol

**Species Reactivity:** Anti-Ras-GTP monoclonal antibody recognizes active H-Ras, N-Ras, and K-Ras from vertebrates.

**Storage Conditions:** Store at -20°C. Avoid repeated freezing and thawing

## Immunoprecipitation/Western blot:

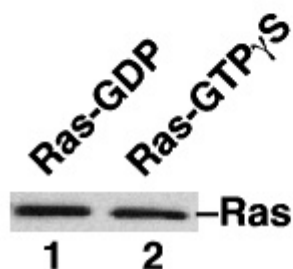
### A. IP/WB



IP: anti-active Ras mAb

WB: anti-Ras mAb

### B. Input



WB: anti-Ras mAb

### IP/WB Analysis of Active Ras Protein.

Purified recombinant Ras proteins were loaded with GDP (lane 1) or GTP $\gamma$ S (lane 2). These proteins were immunoprecipitated with anti-Ras-GTP monoclonal antibody (Cat. # 26909). After SDS/PAGE, the membrane filter was probed with anti-Ras mouse monoclonal antibody (Cat. # 26014).