

## RAS MAB

### Ras Monoclonal Antibody

**Cat. #:** 26014

**Gene Symbol:** RAS

**Description:** Anti-Ras Mouse Monoclonal Antibody

**Background:** Small GTPases are a super-family of cellular signaling regulators. Ras belongs to the Ras sub-family of GTPases that regulate cell proliferation, cell motility, and gene transcription. GTP binding increases the activity of Ras, and the hydrolysis of GTP to GDP renders it inactive. GTP hydrolysis is aided by GTPase activating proteins (GAPs), while exchange of GDP for GTP is facilitated by guanine nucleotide exchange factors (GEFs).

**Immunogen:** Recombinant full length protein of Ras

**Applications:** ELISA, WB, IHC

**Recommended Dilutions:** ELISA 1:100–1:5000

WB 1:100–1:2000

**Concentration:** 1 mg/ml

**Host Species:** Mouse

**Format:** Liquid

**Clonality:** Monoclonal

**Isotype:** IgG

**Purity:** Purified from ascites

**Preservative:** No

**Constituents:** PBS (without  $Mg^{2+}$  and  $Ca^{2+}$ ), pH 7.4, 150 mM NaCl, 50% glycerol

**Species Reactivity:** Ras antibody recognizes H-Ras, N-Ras and K-Ras from vertebrates.

**Storage Conditions:** Store at  $-20^{\circ}C$ . Avoid repeated freezing and thawing

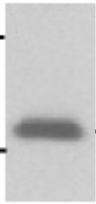
### Western blot:

Western blot:

kDa

26—

17—



—Ras

**WB: anti-Ras mAb**

Western blot analysis of Ras proteins. MEF whole-cell lysate was used for western blot with the monoclonal anti-Ras antibody (cat. # 26014).