

RAS PAB

Ras Polyclonal Antibody

Cat. #: 21021

Gene Symbol: RAS

Description: Anti-Ras Rabbit Polyclonal Antibody

Background: Small GTPases are a super-family of cellular signaling regulators. Ras belongs to the Ras sub-family of GTPases that regulate cell proliferation, cell motility, and gene transcription. GTP binding increases the activity of Ras, and the hydrolysis of GTP to GDP renders it inactive. GTP hydrolysis is aided by GTPase activating proteins (GAPs), while exchange of GDP for GTP is facilitated by guanine nucleotide exchange factors (GEFs).

Immunogen: A synthetic peptide from the C-terminus of Ras

Applications: ELISA, WB, IHC

Recommended Dilutions: ELISA 1:100–1:5000

WB 1:100–1:2000

IHC 1:100–1:1000

Concentration: 0.2 mg/ml

Host Species: Rabbit

Format: Liquid

Clonality: Polyclonal

Isotype: IgG

Purity: Purified from serum

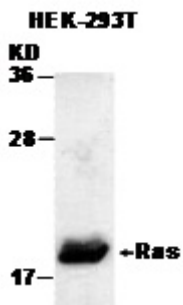
Preservative: No

Constituents: PBS (without Mg^{2+} and Ca^{2+}), pH 7.4, 150 mM NaCl, 50% glycerol

Species Reactivity: Ras antibody recognizes H-Ras, N-Ras and K-Ras from vertebrates.

Storage Conditions: Store at $-20^{\circ}C$. Avoid repeated freezing and thawing

Western blot:



HEK-293T whole-cell lysate was used for Western blot with anti Ras polyclonal antibody (cat # 21021).