

RAS(G12S)**RAS(G12S)****Cat. #:** 26186**Gene Symbol:** H-Ras; K-Ras; N-Ras**Description:** Anti-RAS(G12S) Mouse Monoclonal Antibody**Background:** Ras protein is a membrane-associated GTPase signaling protein that regulates proliferation, differentiation, and cell survival. Ras G12S mutation result in decreased GTPase activity and constitutive signaling, and is correlated with the development of pancreatic intraepithelial neoplasia and lung lesions.**Immunogen:** A synthetic peptide from the internal region of RAS which includes the mutation of G12S, human origin.**Applications:** ELISA, WB, IHC**Recommended Dilutions:**

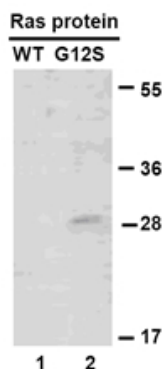
ELISA: 1:1000–1:5000

WB: 1:500–1:1000

IHC: 1:50–1:100

Concentration: 1 mg/ml**Host Species:** Mouse**Format:** Liquid**Clonality:** Monoclonal**Isotype:** IgG**Purity:** Purified from ascites**Preservative:** No**Constituents:** PBS (without Mg^{2+} and Ca^{2+}), pH 7.4, 150 mM NaCl, 50% glycerol**Species Reactivity:** Recognizes G12S mutant, but not wild type RAS of vertebrates.**Storage Conditions:** Store at $-20^{\circ}C$. Avoid repeated freezing and thawing

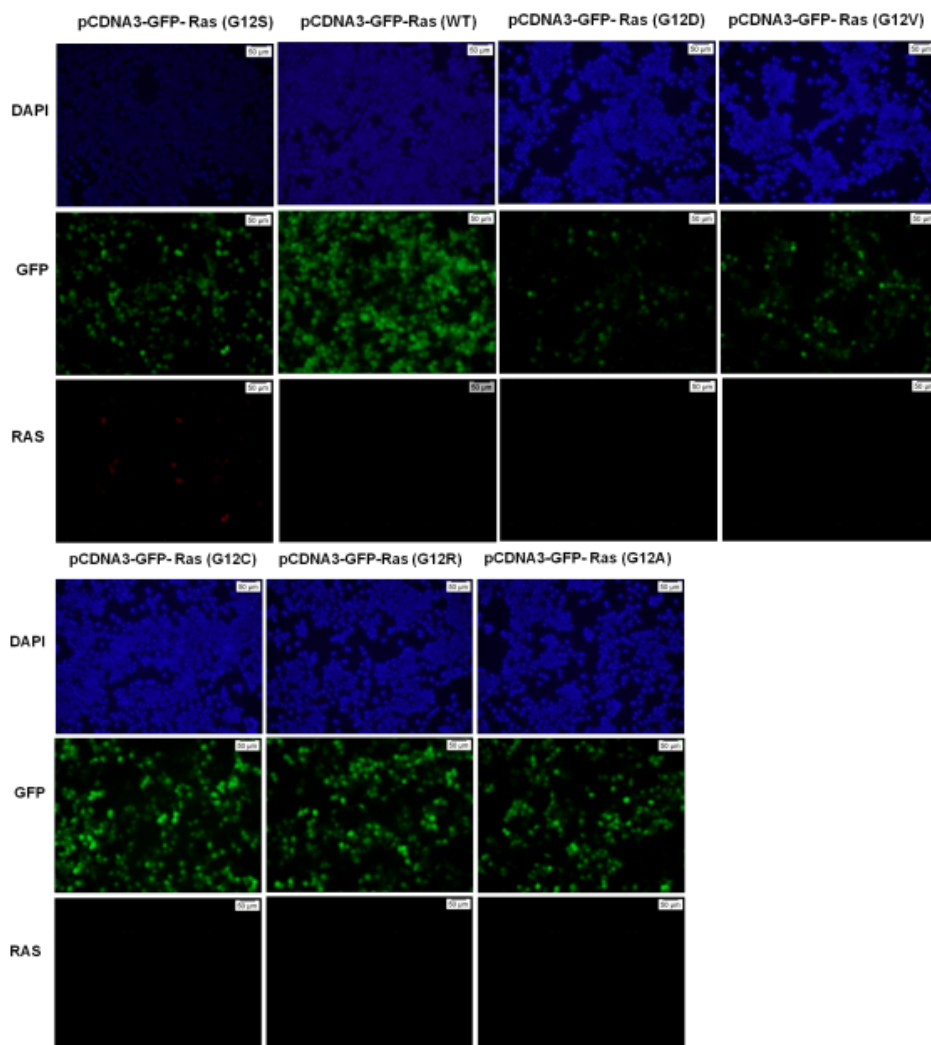
Western blot:



WB: anti-Ras (G12S) mAb

Western blot analysis of recombinant RAS(G12S) and wild type proteins. Purified His-tagged RAS(G12S) protein (lane 2) and corresponding wild type protein (lane 1) were blotted with Anti-RAS(G12S) monoclonal antibody (Cat. #26186).

Immunofluorescence:



Immunofluorescence of cells expressing RAS proteins with Anti-RAS(G12S) antibody. HEK293T cells were transfected with pCDNA3-GFP-Ras(G12S) plasmid, pCDNA3-GFP-Ras(WT) plasmid, pCDNA3-GFP-Ras(G12S) plasmid, pCDNA3-GFP-Ras(G12V) plasmid, pCDNA3-GFP-Ras(G12C) plasmid, pCDNA3-GFP-Ras(G12R) plasmid or pCDNA3-GFP-Ras(G12A) plasmid, then fixed and stained with Anti-RAS(G12S) monoclonal antibody (Cat. #26186).

