

RAS(G13V)

RAS(G13V)

Cat. #: 26477

Gene Symbol: H-Ras; K-Ras; N-Ras

Description: Anti-RAS(G13V) Mouse Monoclonal Antibody

Background: Ras protein is a membrane-associated GTPase signaling protein that regulates proliferation, differentiation, and cell survival. Ras G13V mutation result in decreased GTPase activity and constitutive signaling, and is correlated with the development of pancreatic intraepithelial neoplasia and lung lesions.

Immunogen: A synthetic peptide from the internal region of Ras which includes the mutation of G13V, human origin.

Applications: ELISA, WB, IHC

Recommended Dilutions:

ELISA: 1:1000–1:5000

WB: 1:500–1:1000

IHC: 1:50–1:100

Concentration: 1 mg/ml

Host Species: Mouse

Format: Liquid

Clonality: Monoclonal

Isotype: IgG

Purity: Purified from ascites

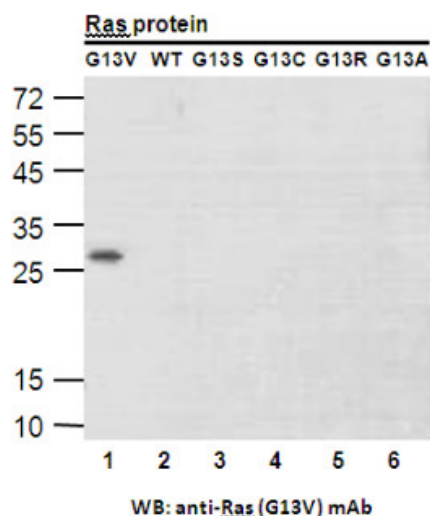
Preservative: No

Constituents: PBS (without Mg^{2+} and Ca^{2+}), pH 7.4, 150 mM NaCl, 50% glycerol

Species Reactivity: Recognizes G13V mutant, but not wild type RAS of vertebrates.

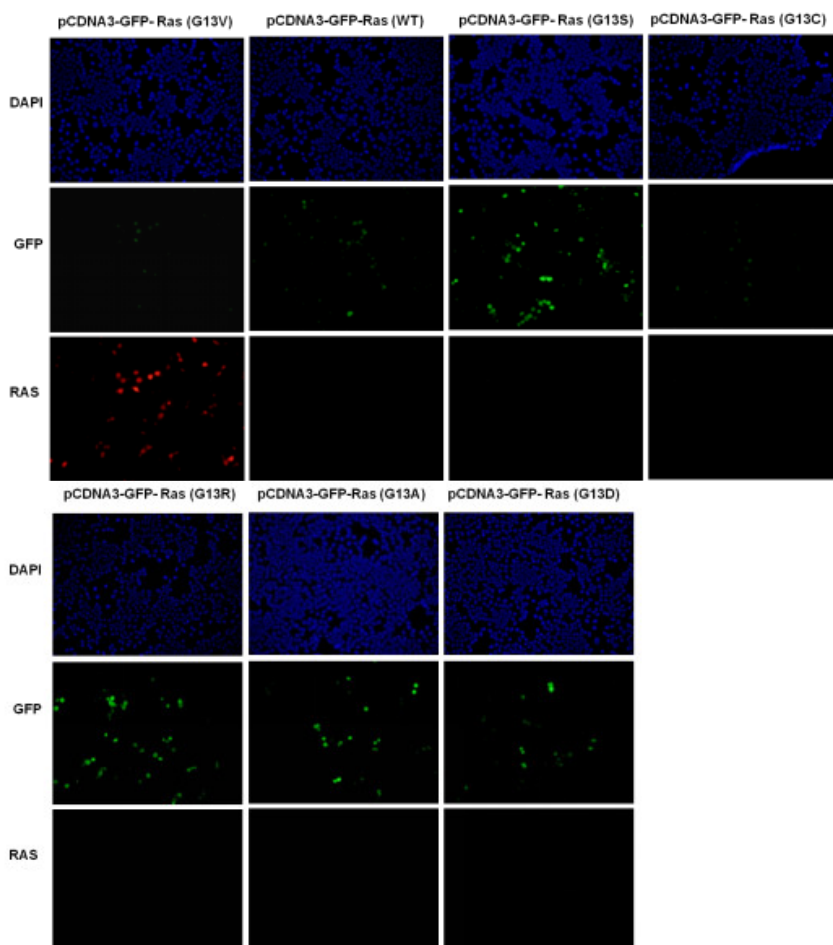
Storage Conditions: Store at $-20^{\circ}C$. Avoid repeated freezing and thawing

Western blot:



Western blot analysis of recombinant Ras proteins. Purified His-tagged RAS(G13V) protein (lane 1), corresponding wild type protein (lane 2), His-tagged Ras (G13S) protein (lane 3), His-tagged Ras (G13C) protein (lane 4), His-tagged Ras (G13R) protein (lane 5), His-tagged Ras (G13A) protein (lane 6) were blotted with Anti-RAS(G13V) monoclonal antibody (Cat. #26477).

Immunofluorescence:



Immunofluorescence of cells expressing Ras proteins with Anti-RAS(G13V) antibody. HEK293T cells were transfected with pCDNA3-GFP-RAS(G13V) plasmid, pCDNA3-GFP-Ras (WT) plasmid, pCDNA3-GFP-Ras (G13S) plasmid, pCDNA3-GFP-Ras (G13C) plasmid, pCDNA3-GFP-Ras (G13R) plasmid, pCDNA3-GFP-Ras (G13A) plasmid or pCDNA3-GFP-Ras (G13D) plasmid, then fixed and stained with Anti-RAS(G13V) monoclonal antibody (Cat. #26477).

