

RAS(Q61L)**Ras(Q61L)****Cat. #:** 26193**Gene Symbol:** Ras(Q61L)**Description:** Anti-Ras(Q61L) Mouse Monoclonal Antibody**Background:** Ras(Q61L) is one type of Ras missense mutations at codon 61, Ras protein is a membrane-associated GTPase signaling protein that regulates proliferation, differentiation, and cell survival. Ras Q61L mutation result in decreased GTPase activity and constitutive signaling, and is correlated with the development of pancreatic intraepithelial neoplasia and lung lesions.**Immunogen:** A synthetic peptide from the internal region of Ras which includes the mutation of Q61L, human origin.**Applications:** ELISA, WB, IF, IHC**Recommended Dilutions:**

ELISA 1:100–1:5000

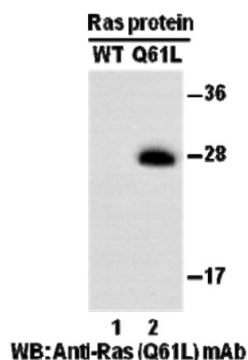
WB 1:100–1:1000

IF 1:50–1:100

IHC 1:50–1:100

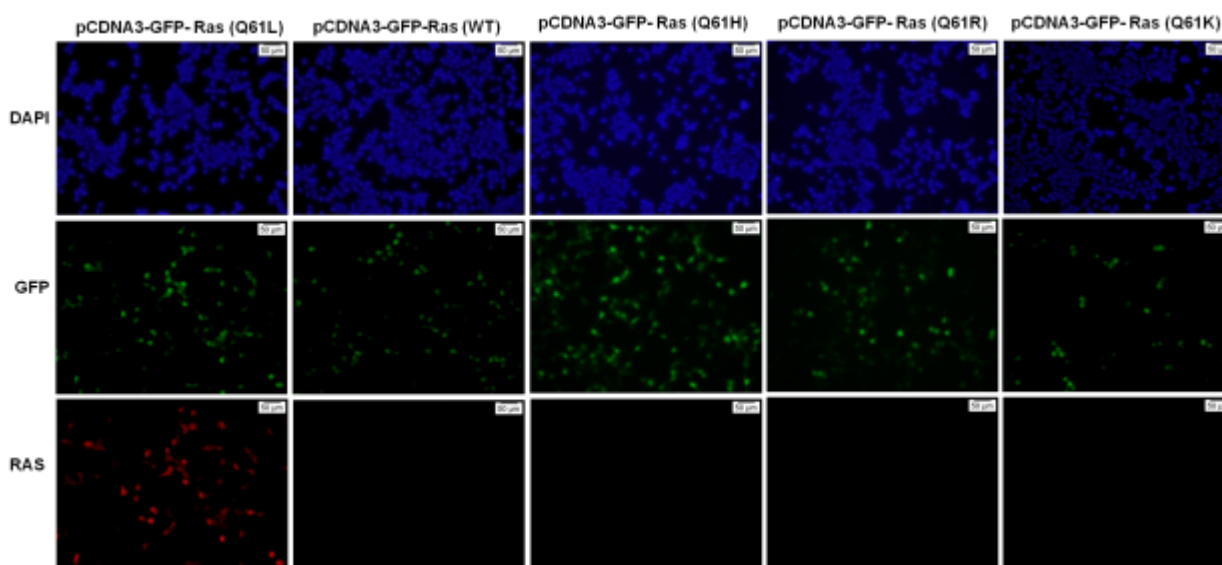
Concentration: 1 mg/ml**Host Species:** Mouse**Format:** Liquid**Clonality:** Monoclonal**Isotype:** IgG**Purity:** Purified from ascites**Preservative:** No**Constituents:** PBS (without Mg^{2+} and Ca^{2+}), pH 7.4, 150 mM NaCl, 50% glycerol**Species Reactivity:** Recognizes Ras(Q61L), but not wild type Ras protein from vertebrates.**Storage Conditions:** Store at $-20^{\circ}C$. Avoid repeated freezing and thawing

Western blot:



Western blot analysis of recombinant Ras proteins. Equal amount of purified Ras Q61H (lane 1), Ras Q61L (lane 2), Ras Q61R (lane 3), kRas WT (lane 4), hRas WT (lane 5), then were loaded and blotted with anti-Ras Q61L mouse monoclonal antibody (Cat. #26193).

Immunofluorescence:



Immunofluorescence of cells expressing Ras proteins with Anti-Ras(Q61L) antibody. HEK293T cells were transfected with pCDNA3-GFP-Ras(Q61L) plasmid, pCDNA3-GFP-Ras (WT) plasmid, pCDNA3-GFP-Ras (Q61H) plasmid, pCDNA3-GFP-Ras (Q61R) plasmid or pCDNA3-GFP-Ras (Q61K) plasmid, then fixed and stained with Anti-Ras(Q61L) monoclonal antibody (Cat. #26193).