

## RAS(Q61R)

### Ras(Q61R)

**Cat. #:** 26192

**Gene Symbol:** Ras(Q61R)

**Description:** Anti-Ras(Q61R) Mouse Monoclonal Antibody

**Background:** Ras protein is a membrane associated GTPase signaling protein that regulates proliferation, differentiation, and cell survival. Ras Q61R mutation result in decreased GTPase activity and constitutive signaling, and is correlated with the development of pancreatic intraepithelial neoplasia and lung lesions.

**Immunogen:** A synthetic peptide from the internal region of Ras which includes the mutation of Q61R, human origin.

**Applications:** ELISA, WB, IHC

**Recommended Dilutions:**

ELISA 1:100–1:5000

WB 1:100–1:1000

IHC 1:50–1:100

**Concentration:** 1 mg/ml

**Host Species:** Mouse

**Format:** Liquid

**Clonality:** Monoclonal

**Isotype:** IgG

**Purity:** Purified from ascites

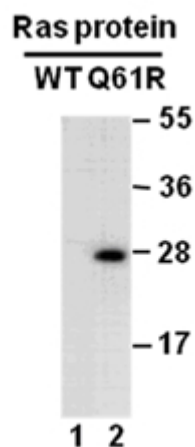
**Preservative:** No

**Constituents:** PBS (without  $Mg^{2+}$  and  $Ca^{2+}$ ), pH 7.4, 150 mM NaCl, 50% glycerol

**Species Reactivity:** Recognizes Ras(Q61R), but not wild type Ras protein from vertebrates.

**Storage Conditions:** Store at  $-20^{\circ}C$ . Avoid repeated freezing and thawing

## Western blot:



WB: Anti-Ras(Q61R) mAb

Western blot analysis of recombinant Ras WT and Q61R proteins. Equal amount of purified Ras WT and Q61R proteins were loaded and blotted with anti-Ras(Q61R) mouse monoclonal antibody (Cat. # 26192).