

CTLA4 MAB (REFERENCE MAB)

Cat.#: 28031

Product Name: Anti-CTLA4 Reference Monoclonal Antibody

Synonyms: CTLA4;CD152

Description: Anti-CTLA4 Reference Monoclonal Antibody

Background: Research grade biosimilar. Not for use in therapeutic or diagnostic procedures for humans or animals.

Applications: ELISA; Flow Cyt

Recommended Dilutions: ELISA 1:5000-10000; Flow Cyt 1:100

Host Species: Homo sapiens

Isotype: IgG1

Purification: Purified from cell culture supernatant by affinity chromatography

Species Reactivity: Human CTLA-4

Constituents: Lyophilized from sterile PBS, pH 7.4. 5% – 8% trehalose is added as protectants before lyophilization.

Storage & Shipping: Store at -20°C to -80°C for 12 months in lyophilized form. After reconstitution, if not intended for use within a month, aliquot and store at -80°C (Avoid repeated freezing and thawing).

Anti-CTLA4 (ipilimumab biosimilar) mAb ELISA
0.2 µg of CTLA-4, mFc-His Tagged protein per well

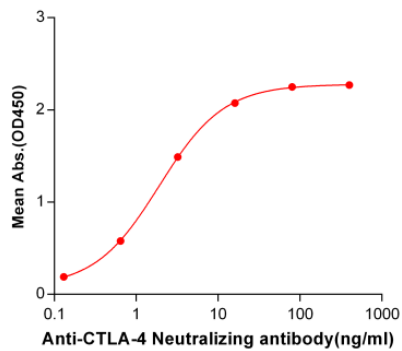


Figure 1. ELISA plate pre-coated by 2 µg/ml (100 µl/well) Human CTLA4, mFc-His tagged protein 11145 can bind Anti-CTLA4 Neutralizing antibody in a linear range of 0.13-16.0 ng/ml.

Anti-CTLA4 (ipilimumab biosimilar) mAb ELISA
0.2 µg of CTLA-4, hFc Tagged protein per well

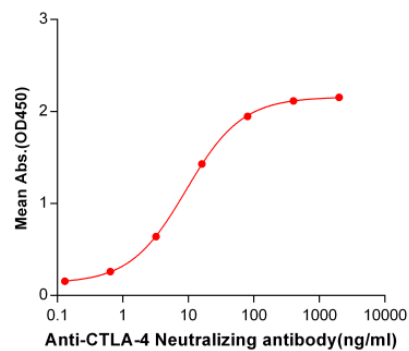


Figure 2. ELISA plate pre-coated by 2 µg/ml (100 µl/well) Human CTLA4, hFc tagged protein (11289) can bind Anti-CTLA4 Neutralizing antibody in a linear range of 0.64-80.0 ng/ml. In order to specifically detect 28031, mouse anti-human Fab-specific antibody was used as detection antibody.

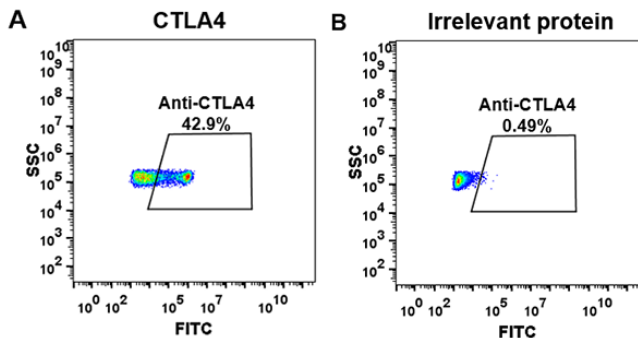


Figure 3. HEK293 cell line transfected with irrelevant protein (B) and human CTLA4 (A) were surface stained with anti-CTLA4 neutralizing antibody 1 µg/ml (ipilimumab) followed by Alexa 488-conjugated anti-human IgG secondary antibody.