

## LAG3 MAB (RELATLIMAB)

**Cat.#:** 28069

**Product Name:** Anti-LAG3 (Relatlimab) Monoclonal Antibody

**Synonyms:** BMS-986016; NO-4482

**Description:** Anti-LAG3 (relatlimab biosimilar) Monoclonal Antibody

**Background:** Research grade biosimilar. Not for use in therapeutic or diagnostic procedures for humans or animals.

**Applications:** ELISA; Flow Cyt

**Recommended Dilutions:** ELISA 1:5000-10000; Flow Cyt 1:100

**Host Species:** Homo sapiens

**Isotype:** IgG4

**Purification:** Purified from cell culture supernatant by affinity chromatography

**Species Reactivity:** Human LAG3

**Constituents:** Lyophilized from sterile PBS, pH 7.4. 5 % – 8% trehalose is added as protectants before lyophilization.

**Storage & Shipping:** Store at  $-20^{\circ}\text{C}$  to  $-80^{\circ}\text{C}$  for 12 months in lyophilized form. After reconstitution, if not intended for use within a month, aliquot and store at  $-80^{\circ}\text{C}$  (Avoid repeated freezing and thawing).

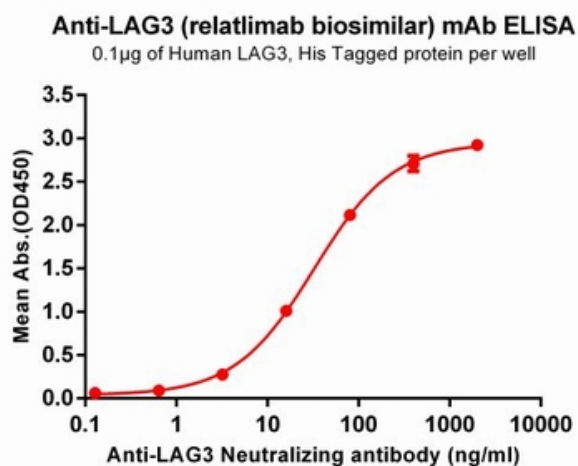


Figure 1. ELISA plate pre-coated by 1  $\mu\text{g}/\text{ml}$  (100  $\mu\text{l}/\text{well}$ ) Human LAG3, His tagged protein 11315 can bind Anti-LAG3 Neutralizing antibody (28069) in a linear range of 0.6-100ng/ml.

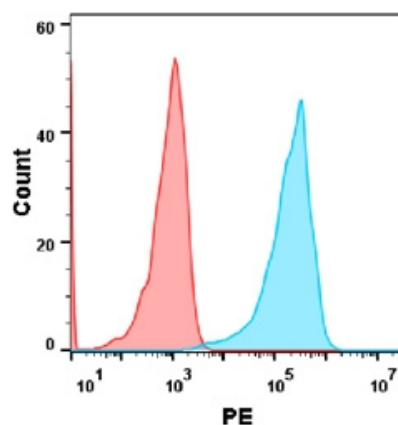


Figure 2. Flow cytometry analysis with Anti-LAG3 mAb 1  $\mu\text{g}/\text{ml}$  (relatlimab) on Expi293 cells transfected with human LAG3 (Blue histogram) or Expi293 transfected with irrelevant protein (Red histogram).