

## RET(C634Y)

### RET(C634Y)

**Cat. #:** 26146

**Gene Symbol:** RET, PTC, CDHF12, CAHF16, HSCR1, MEN2A, MEN2B

**Description:** Anti-RET(C634Y) Mouse Monoclonal Antibody

**Background:** RET protein is encoded by the RET proto- oncogene. It is a receptor tyrosine kinase. RET loss of function mutations are associated with the development of Hirschsprung's disease, while gain of function mutations are associated with development of various types of human cancer, including medullary thyroid carcinoma, multiple endocrine neoplasia type 2A and 2B, pheochromocytoma and parathyroid hyperplasia.

**Immunogen:** A synthetic peptide from the internal region of RET which includes the mutation of C634Y, human origin.

**Applications:** ELISA, WB, IHC

**Recommended Dilutions:**

ELISA: 1:1000-1:2000

WB: 1:500-1:1000

IHC: 1:50-1:100

**Concentration:** 0.5 mg/ml

**Host Species:** Mouse

**Format:** Liquid

**Clonality:** Monoclonal

**Isotype:** IgG

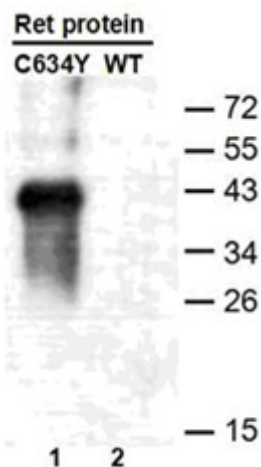
**Purity:** Purified from ascites

**Preservative:** No

**Constituents:** PBS (without Mg<sup>2+</sup> and Ca<sup>2+</sup>), pH 7.4, 150 mM NaCl, 50% glycerol

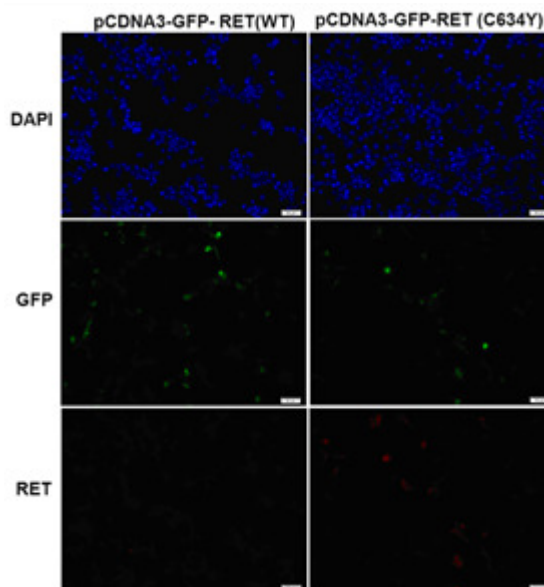
**Species Reactivity:** Recognizes C634Y mutant, but not wild type RET of vertebrates.

**Storage Conditions:** Store at -20°C. Avoid repeated freezing and thawing



**Western blot:** WB: anti-Ret (C634Y) mAb

Western blot analysis of recombinant RET(C634Y) and wild type proteins. Purified His-tagged RET(C634Y) protein (lane1) and corresponding wild type protein (lane2) were blotted with Anti-RET(C634Y) monoclonal antibody (Cat. #26146).



**Immunoprecipitation/Western blot:**

Immunofluorescence of cells expressing RET proteins with Anti-RET(C634Y) antibody. HEK293T cells were transfected with pCDNA3-GFP-RET (WT) plasmid (left column) or pCDNA3-GFP-RET(C634Y) plasmid (right column), then fixed and stained with Anti-RET(C634Y) monoclonal antibody (Cat. #26146).