

RHEB-GTP

Anti-RhebGTP Monoclonal Antibody

Cat. #: 26910

Size: 30 μ L

Gene Symbol: RHEB

Description: Anti-Rheb-GTP Monoclonal Antibody

Background: Small GTPases are a super-family of cellular signaling regulators. Rheb is a member of the Ras-superfamily GTPases. Rheb has been shown to interact with C-Raf, Mammalian target of rapamycin (mTOR), TSC2, Ataxia telangiectasia mutated (ATM), KIAA1303 and Ataxia telangiectasia and Rad3 related (ATR).

Immunogen: Recombinant full-length protein of active Rheb.

Applications: IP, IHC, IF (Not applicable for WB since SDS denatures Rheb GTPase)

Recommended Dilutions:

IP: 1 μ g for 1~2 mg total cellular proteins

IHC, IF: 1:50-1:250

Concentration: 1 mg/ml

Host Species: Mouse

Format: Liquid

Clonality: Monoclonal

Isotype: IgM

Purity: Purified from ascites

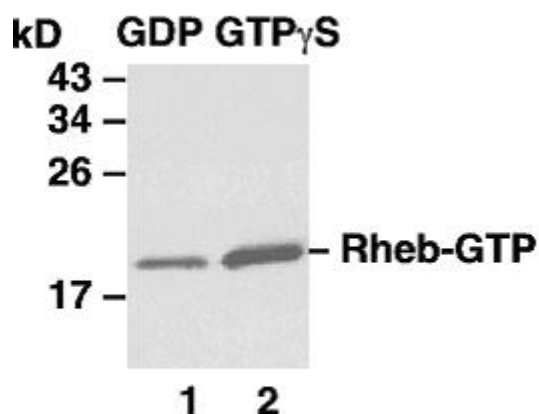
Preservative: No

Constituents: PBS (without Mg^{2+} and Ca^{2+}), pH 7.4, 150 mM NaCl, 50% glycerol

Species Reactivity: Anti-Rheb-GTP monoclonal antibody recognizes active Rheb of vertebrates.

Storage Conditions: Store at $-20^{\circ}C$. Avoid freeze/thaw cycles

Immunoprecipitation/Western blot: Rheb protein



IP: anti-active Rheb mAb

WB: anti-Rheb pAb

Rheb activation assay.

Purified Rheb proteins were immunoprecipitated after treated with GDP (lane 1) or GTP γ S (lane 2). Immunoprecipitation was done with the anti-Rheb-GTP monoclonal antibody (Cat. No. 26910). Immunoblot was with an anti-Rheb rabbit polyclonal antibody (Cat. No. 21098).