

**RHEB PAB****RheB Polyclonal Antibody****Cat. #:** 21098**Gene Symbol:** RHEB**Description:** Anti-RheB Rabbit Polyclonal Antibody**Background:** Small GTPases are a super-family of cellular signaling regulators. RheB is a member of the Ras-superfamily GTPases. RheB has been shown to interact with C-Raf, Mammalian target of rapamycin (mTOR), TSC2, Ataxia telangiectasia mutated (ATM), KIAA1303 and Ataxia telangiectasia and Rad3 related (ATR).**Immunogen:** A synthetic peptide from the C-terminal region of human RheB**Applications:** ELISA, WB, IHC**Recommended Dilutions:**

ELISA: 1:1000–1:5000

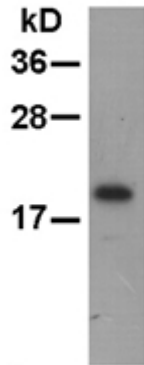
WB: 1:100–1:1000

IHC: 1:100–1:1000

**Concentration:** 0.2 mg/ml**Host Species:** Rabbit**Format:** Liquid**Clonality:** Polyclonal**Isotype:** IgG**Purity:** Purified from serum**Preservative:** No**Constituents:** PBS (without  $Mg^{2+}$  and  $Ca^{2+}$ ), pH 7.4, 150 mM NaCl, 50% glycerol**Species Reactivity:** Anti-RheB antibody recognizes RheB of vertebrates.**Storage Conditions:** Store at  $-20^{\circ}C$ . Avoid repeated freezing and thawing

## Western blot:

HEK-293T



**pAb: anti-RheB pAb**

Western blot analysis of RheB proteins. Whole-cell lysate of HEK-293T cells was used for western blot with the polyclonal anti RheB antibody (Cat # 21098).