

CDC42+RAC1+RHOA PAB

Cdc42/Rac1/RhoA Polyclonal Antibody

Cat. #: 21035

Gene Symbol: CDC42+RAC1+RHOA

Description: Anti-Cdc42+Rac1+RhoA Rabbit Polyclonal Antibody

Background: Small GTPases are a super-family of cellular signaling regulators. The Rho sub-family GTPases regulate cell motility, cell division, and gene transcription.

Immunogen: A synthetic peptide from the N-terminal region common among Cdc42, Rac1, and RhoA.

Applications: ELISA, WB, IHC

Recommended Dilutions: ELISA 1:100–1:5000

WB 1:100–1:2000

IHC 1:100–1:1000

Concentration: 0.2 mg/ml

Host Species: Rabbit

Format: Liquid

Clonality: Polyclonal

Isotype: IgG

Purity: Purified from serum

Preservative: No

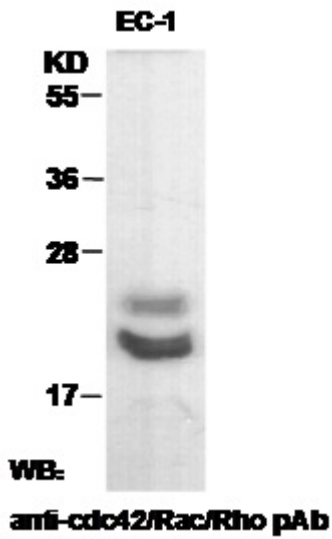
Constituents: PBS (without Mg^{2+} and Ca^{2+}), pH 7.4, 150 mM NaCl, 50% glycerol

Species Reactivity: Rho family pan antibody recognizes Cdc42, Rac1, and RhoA from vertebrates.

Storage Conditions: Store at $-20^{\circ}C$. Avoid repeated freezing and thawing

Download Datasheet: 

Western blot:



EC-1 whole-cell lysate was used for Western blot with the polyclonal Rho family pan antibody (cat # 21035).