

RHOA PAB

RhoA Polyclonal Antibody

Cat. #: 21017

Gene Symbol: RHOA

Description: Anti-RhoA Rabbit Polyclonal Antibody

Background: Small GTPases are a super-family of cellular signaling regulators. RhoA belongs to the Rho sub-family of GTPases. Rho proteins play critical roles in many actin cytoskeleton- dependent processes including platelet aggregation, cell motility, contraction, and cytokinesis. It regulates the formation of stress fibers and focal adhesions in fibroblasts and Ca²⁺ sensitivity of smooth muscle contraction.

Immunogen: A synthetic peptide from the C-terminal region of RhoA.

Applications: ELISA, WB, IHC, IP

Recommended Dilutions:

ELISA: 1:100–1:5000

WB: 1:100–1:2000

IHC: 1:10–1:1000

Concentration: 0.2 mg/ml

Host Species: Rabbit

Format: Liquid

Clonality: Polyclonal

Purity: Purified from serum

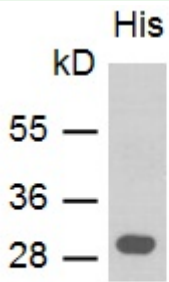
Preservative: No

Constituents: PBS (without Mg²⁺ and Ca²⁺), pH 7.4, 150 mM NaCl, 51% glycerol Species

Species Reactivity: RhoA antibody recognizes RhoA from vertebrates.

Storage Conditions: Store at –20°C. Avoid repeated freezing and thawing

Western blot:



WB:anti-RhoA pAb

Western blot analysis of RhoA proteins.

Purified recombinant His-RhoA protein was used for western blot with the anti RhoA rabbit polyclonal antibody (Cat. # 21017).