

RIC-8A MAB**Ric-8A****Cat. #:** 26071**Gene Symbol:** RIC8A**Description:** Anti-Ric8A Mouse Monoclonal Antibody

Background: Ric-8A (Resistance to Inhibitors of Cholinesterase-8A) interacts with $G\alpha_o$, $G\alpha_i$, $G\alpha_q$ and $G\alpha_{13}$, but not $G\alpha_s$, proteins. Mammalian Ric-8A protein is a guanine nucleotide exchange factor for $G\alpha_q$, $G\alpha_i$, $G\alpha_o$, $G\alpha_{12}$, $G\alpha_{13}$, but not for $G\alpha_s$. *C. elegans* Ric8 (also named Synembryn) is required for proper asymmetric division of 1-cell-stage embryos. Ric8 is required for the generation of substantial pulling forces on astral microtubules.

Immunogen: A synthetic peptide near the C-terminus of Ric-8A, human origin.

Applications: ELISA, WB, IHC, IP

Recommended Dilutions:

ELISA: 1:100–1:5000

WB: 1:100–1:2000

IHC: 1:50–1:100

Concentration: 1 mg/ml

Host Species: Mouse

Format: Liquid

Clonality: Monoclonal

Isotype: IgG

Purity: Purified from ascites

Preservative: No

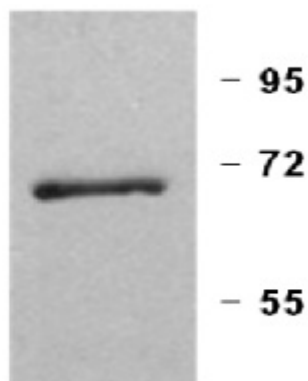
Constituents: PBS (without Mg^{2+} and Ca^{2+}), pH 7.4, 150 mM NaCl, 50% glycerol

Species Reactivity: Ric-8A antibody recognizes Ric-8A from vertebrates.

Storage Conditions: Store at -20°C . Avoid repeated freezing and thawing

Western blot:

HeLa Cells



WB: Anti-Ric-8A mAb

Western blot analysis of Ric-8A proteins. Whole-cell lysate of HeLa cells was blotted with anti Ric-8A monoclonal antibody (Cat. #26071).