

CD40L MAB (RUPLIZUMAB)

Cat.#: 28051

Product Name: Anti-CD40L (Ruplizumab) Monoclonal Antibody

Synonyms: CD40LG;DI54;D40L;IGM1;GM;MD3;-BAM;NFSF5;RAP;p39

Description: Anti-CD40L (ruplizumab) Monoclonal Antibody

Background: Research grade biosimilar. Not for use in therapeutic or diagnostic procedures for humans or animals.

Applications: ELISA; Flow Cyt

Recommended Dilutions: ELISA 1:5000-10000; Flow Cyt 1:100

Host Species: Humanized

Isotype: IgG1

Purification: Purified from cell culture supernatant by affinity chromatography

Species Reactivity: Human CD40 Ligand

Constituents: Lyophilized from sterile PBS, pH 7.4. 5 % – 8% trehalose is added as protectants before lyophilization.

Storage & Shipping: Store at -20°C to -80°C for 12 months in lyophilized form. After reconstitution, if not intended for use within a month, aliquot and store at -80°C (Avoid repeated freezing and thawing).

Anti-CD40L (ruplizumab biosimilar) mAb ELISA

0.2 µg of Human CD40 Ligand, hFc Tagged protein per well

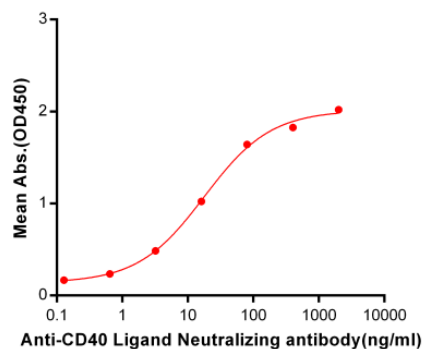


Figure 1. ELISA plate pre-coated by 2 µg/ml (100 µl/well) Human CD40L, hFc tagged protein (11241) can bind Anti-CD40L Neutralizing antibody (28051) in a linear range of 0.64-400 ng/ml. In order to specifically detect 28051, mouse anti-human Fab-specific antibody was used as detection antibody.

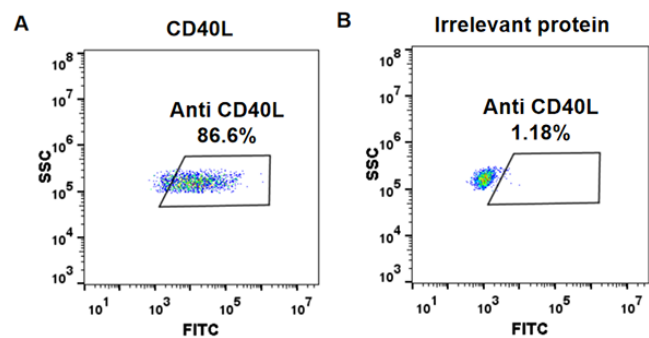


Figure 2. HEK293 cell line transfected with irrelevant protein (B) and human CD40L (A) were surface stained with Anti-CD40L mAb 1 µg/ml (ruplizumab) followed by Alexa 488-conjugated anti-human IgG secondary antibody.