

## SAR1-GTP

### Anti-Sar1GTP Mouse Monoclonal Antibody

**Cat. #:** 26916

**Size:** 30  $\mu$ L

**Gene Symbol:** SAR1

**Description:** Anti-Sar1-GTP Mouse Monoclonal Antibody

**Background:** Small GTPases are a super-family of cellular signaling regulators. Sar1 is a member of these small GTPases. Sar1 functions as a molecular switch to control protein-protein and protein-lipid interactions that direct vesicle budding from the ER.

**Immunogen:** Recombinant full length protein of active Sar1a.

**Applications:** IP, IHC and IF (**Not applicable for WB since SDS denatures Sar1 GTPase**)

**Published Applications:** [IP, IHC and IF - Click for Details](#)

**Recommended Dilutions:**

IP: 1  $\mu$ g for 1~2 mg total cellular proteins

IHC, IF: 1:50-1:250

**Concentration:** 1 mg/ml

**Host Species:** Mouse

**Format:** Liquid

**Clonality:** Monoclonal

**Isotype:** IgG

**Purity:** Purified from ascites

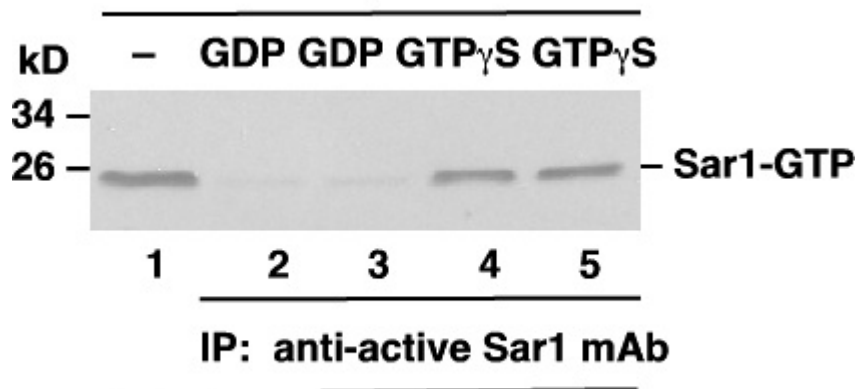
**Preservative:** No

**Constituents:** PBS (without  $Mg^{2+}$  and  $Ca^{2+}$ ), pH 7.4, 150 mM NaCl, 50% glycerol

**Species Reactivity:** Anti-active Sar1 antibody recognizes active Sar1 of vertebrates.

**Storage Conditions:** Store at  $-20^{\circ}C$ . Avoid repeated freezing and thawing

## Immunoprecipitation/Western blot: Sar1 protein



**WB: anti-Sar1 pAb**

### Sar1 Activation Assay.

Purified Sar1 proteins were loaded with GDP (lanes 2 and 3) or GTP $\gamma$ S (lanes 4 and 5). Immunoprecipitation was done with the anti-active Sar1 monoclonal antibody (Cat. No. 26916). Immunoblot was with an anti-Sar1 rabbit polyclonal antibody (Cat. No. 21090).