

SAR1 MAB**Sar1 Monoclonal Antibody****Cat. #:** 26021**Gene Symbol:** SAR1**Description:** Anti-Sar1 Mouse Monoclonal Antibody**Background:** Small GTPases are a super-family of cellular signaling regulators. Sar1 is a member of these small GTPases. Sar1 functions as a molecular switch to control protein–protein and protein–lipid interactions that direct vesicle budding from the ER.**Immunogen:** Recombinant full length Sar1a protein.**Applications:** ELISA, WB, IHC**Recommended Dilutions:**

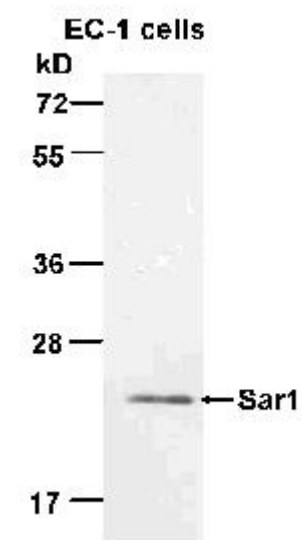
ELISA: 1:100–1:5000

WB: 1:100–1:2000

IHC: 1:50–1:100

Concentration: 1 mg/ml**Host Species:** Mouse**Format:** Liquid**Clonality:** Monoclonal**Isotype:** IgG**Purity:** Purified from ascites**Preservative:** No**Constituents:** PBS (without Mg^{2+} and Ca^{2+}), pH 7.4, 150 mM NaCl, 50% glycerol**Species Reactivity:** Sar1 antibody recognizes Sar1 proteins of vertebrates.**Storage Conditions:** Store at $-20^{\circ}C$. Avoid repeated freezing and thawing**Western blot:**

Western blot:



WB: anti-Sar1 mAb

Western blot analysis of Sar1 proteins. EC-1 whole-cell lysate was used for Western blots with anti-Sar1 mouse monoclonal antibody (Cat# 26021).