

SCF (DM194) RABBIT MAB**Cat.#:** 28537**Product Name:** Anti-SCF(DM194) Rabbit Monoclonal Antibody**Synonyms:** DCUA; DFNA69;FPH2;FPHH; Kitl;KL-1;MGF;SCF; SF;SHEP7;SLF**Description:** Anti-SCF antibody(DM194) Rabbit Monoclonal Antibody**Background:** This gene encodes the ligand of the tyrosine-kinase receptor encoded by the KIT locus. This ligand is a pleiotropic factor that acts in utero in germ cell and neural cell development; and hematopoiesis; all believed to reflect a role in cell migration. In adults; it functions pleiotropically; while mostly noted for its continued requirement in hematopoiesis. Two transcript variants encoding different isoforms have been found for this gene.**Applications:** ELISA; Flow Cyt**Recommended Dilutions:** ELISA 1:5000-10000; Flow Cyt 1:100**Host Species:** Rabbit**Isotype:** Rabbit IgG**Purification:** Purified from cell culture supernatant by affinity chromatography**Species Reactivity:** Human SCF**Constituents:** Lyophilized from sterile PBS, pH 7.4. 5 % – 8% trehalose is added as protectants before lyophilization.**Storage & Shipping:** Store at -20°C to -80°C for 12 months in lyophilized form. After reconstitution, if not intended for use within a month, aliquot and store at -80°C (Avoid repeated freezing and thawing).

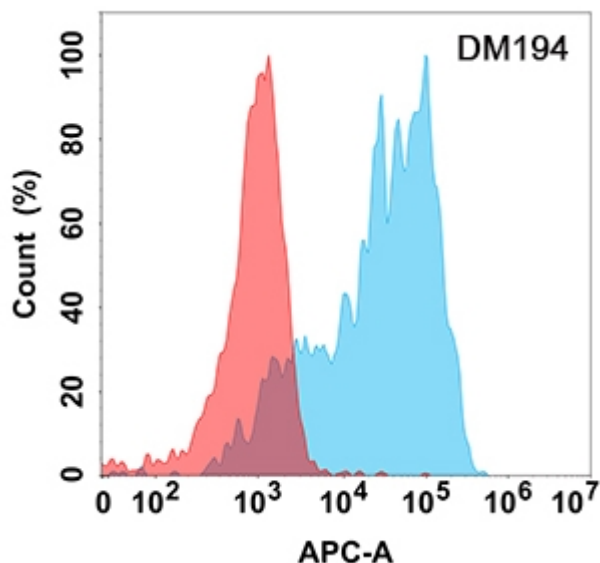


Figure 1. Flow cytometry analysis with Anti-SCF (DM194) on Expi293 cells transfected with human SCF (Blue histogram) or Expi293 transfected with irrelevant protein (Red histogram).