

## SEPTIN9 PAB

### Septin9 Polyclonal Antibody

**Cat. #:** 21126

**Gene Symbol:** SEPTIN9

**Description:** Anti-Septin9 Rabbit Polyclonal Antibody

**Background:** Septin9 belongs to the septin family. It is essential for pseudopod protrusion, tumor cell migration and invasion.

**Immunogen:** A synthetic peptide from the internal region of Septin9 isoform of human origin.

**Applications:** ELISA, WB, IHC, IP

**Recommended Dilutions:**

ELISA: 1:100–1:5000

WB: 1:100–1:1000

IHC: 1:50–1:100

**Concentration:** 0.2 mg/ml

**Host Species:** Rabbit

**Format:** Liquid

**Clonality:** Polyclonal

**Purity:** Purified from serum

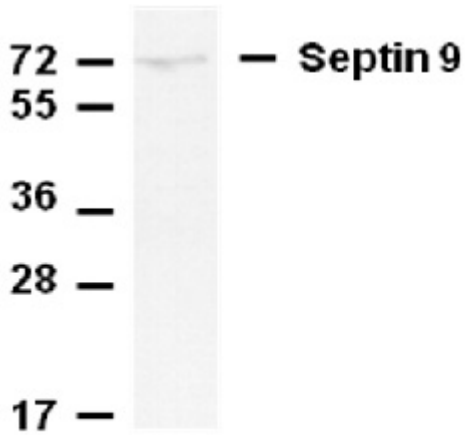
**Preservative:** No

**Constituents:** PBS (without  $Mg^{2+}$  and  $Ca^{2+}$ ), pH 7.4, 150 mM NaCl, 50% glycerol

**Species Reactivity:** Anti-Septin-9 antibody recognizes Septin-9 of vertebrates.

**Storage Conditions:** Store at  $-20^{\circ}C$ . Avoid repeated freezing and thawing

## Western blot:



## WB: anti-Septin 9 pAb

Whole-cell lysate of HEK293T cells was used for western blot with the polyclonal Anti-Septin9 antibody (Cat # 21126).