

SIGLEC7 (DMC475) IGG1 CHIMERIC MAB

Cat.#: 28251

Product Name: Anti-SIGLEC7(DMC475) IgG1 Chimeric Monoclonal Antibody

Synonyms: AIRM-1; AIRM1; CD328; CDw328; D-siglec; p75; p75:AIRM1; QA79; SIGLEC-7; SIGLEC19P; SIGLECP2

Description: Anti-SIGLEC7 antibody(DMC475) IgG1 Chimeric Monoclonal Antibody

Background: Putative adhesion molecule that mediates sialic-acid dependent binding to cells. Preferentially binds to alpha-2,3- and alpha-2,6-linked sialic acid. Also binds disialogangliosides (disialogalactosyl globoside; disialyl lactotetraosylceramide and disialyl GalNAc lactotetraosylceramide). The sialic acid recognition site may be masked by cis interactions with sialic acids on the same cell surface. In the immune response; may act as an inhibitory receptor upon ligand induced tyrosine phosphorylation by recruiting cytoplasmic phosphatase(s) via their SH2 domain(s) that block signal transduction through dephosphorylation of signaling molecules. Mediates inhibition of natural killer cells cytotoxicity. May play a role in hemopoiesis. Inhibits differentiation of CD34 cell precursors towards myelomonocytic cell lineage and proliferation of leukemic myeloid cells (in vitro).[UniProtKB:Swiss-Prot Function]

Applications: Flow Cyt

Recommended Dilutions: Flow Cyt 1:100

Host Species: Rabbit

Isotype: Rabbit:Human Fc chimeric IgG1

Purification: Purified from cell culture supernatant by affinity chromatography

Species Reactivity: Human SIGLEC7

Constituents: Lyophilized from sterile PBS, pH 7.4. 5 % – 8% trehalose is added as protectants before lyophilization.

Storage & Shipping: Store at -20°C to -80°C for 12 months in lyophilized form. After reconstitution, if not intended for use within a month, aliquot and store at -80°C (Avoid repeated freezing and thawing).

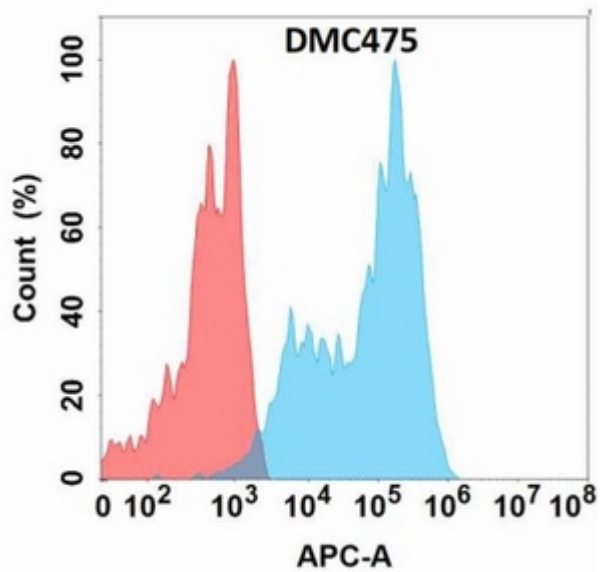


Figure 1. Flow cytometry analysis with Anti-SIGLEC7 (DMC475) on Expi293 cells transfected with human SIGLEC7 (Blue histogram) or Expi293 transfected with irrelevant protein (Red histogram).