

SIRPA(DM8) RABBIT MAB

Cat.#: 28292

Product Name: Anti-SIRPa(DM8) Antibody Rabbit Monoclonal Antibody

Synonyms: BIT; CD172a; MFR; MYD-1; P84; PTPNS1; SHPS-1; SHPS1; SIRP; SIRP-ALPHA-1; SIRPalpha; SIRPalpha2

Description: Anti-SIRPa(DM8) antibody Rabbit Monoclonal Antibody

Background: The protein encoded by this gene is a member of the signal-regulatory-protein (SIRP) family; and also belongs to the immunoglobulin superfamily. SIRP family members are receptor-type transmembrane glycoproteins known to be involved in the negative regulation of receptor tyrosine kinase-coupled signaling processes. This protein can be phosphorylated by tyrosine kinases. The phospho-tyrosine residues of this PTP have been shown to recruit SH2 domain containing tyrosine phosphatases (PTP); and serve as substrates of PTPs. This protein was found to participate in signal transduction mediated by various growth factor receptors. CD47 has been demonstrated to be a ligand for this receptor protein. This gene and its product share very high similarity with several other members of the SIRP family. These related genes are located in close proximity to each other on chromosome 20p13. Multiple alternatively spliced transcript variants have been determined for this gene. [provided by RefSeq; Jul 2008]

Applications: ELISA; Flow Cyt; IF; IP

Recommended Dilutions: Flow Cyt 1:100; IP 1:30

Host Species: Rabbit

Isotype: Rabbit IgG

Purification: Purified from cell culture supernatant by affinity chromatography

Species Reactivity: Human SIRPa

Constituents: Lyophilized from sterile PBS, pH 7.4. 5 % – 8% trehalose is added as protectants before lyophilization.

Storage & Shipping: Store at -20°C to -80°C for 12 months in lyophilized form. After reconstitution, if not intended for use within a month, aliquot and store at -80°C (Avoid repeated freezing and thawing).

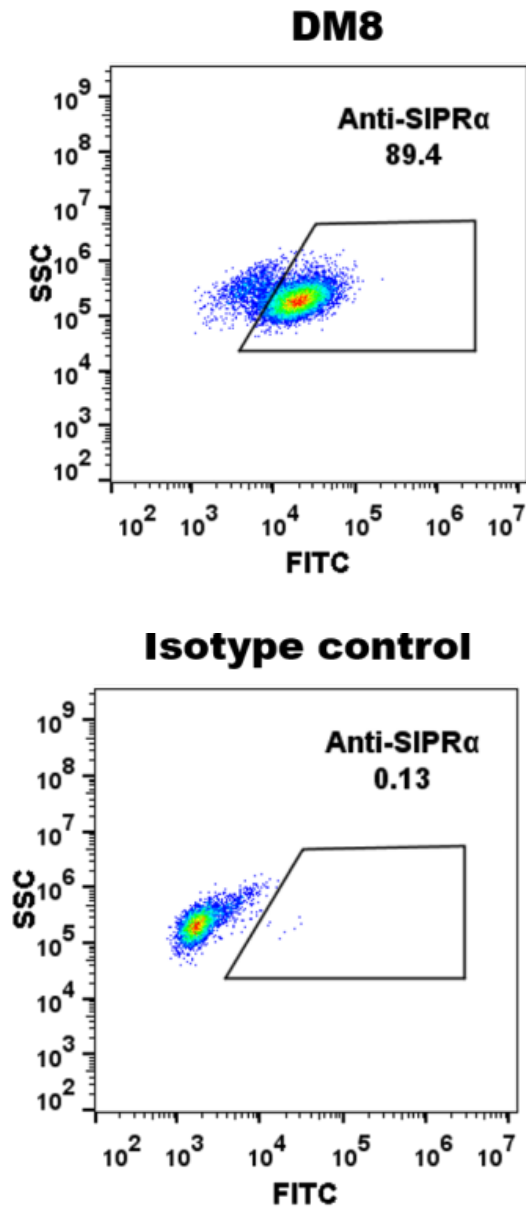


Figure 1. THP-1 cell line were surface stained with Rabbit anti-SIRP α monoclonal antibody 1 μ g/ml (clone: DM8) and Rabbit IgG isotype control antibody followed by Alexa 488-conjugated anti-rabbit IgG secondary antibody.

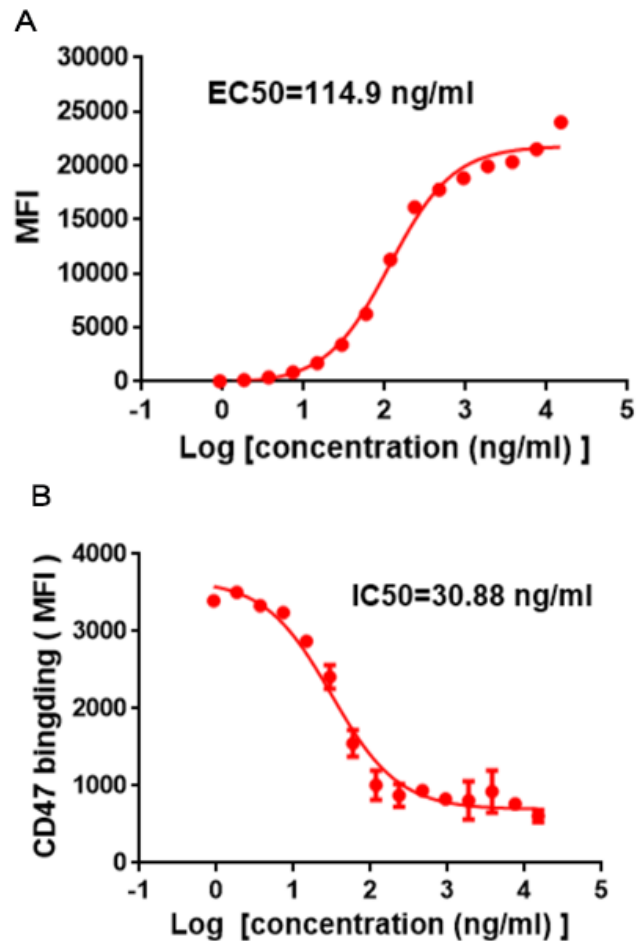


Figure 2. A) Flow cytometry data of serially titrated Rabbit anti-SIRP α monoclonal antibody (clone: DM8). The Y-axis represents the mean fluorescence intensity (MFI) while the X-axis represents the concentration of IgG used. B) Competition assay demonstrating DM8 blockade of CD47 binding to THP-1 cells. IC50=30.88ng/ml.