

**SLAMF1 (DMC445) IGG1 CHIMERIC MAB****Cat.#:** 28233**Product Name:** Anti-SLAMF1(DMC445) IgG1 Chimeric Monoclonal Antibody**Synonyms:** SLAMF1; CD150; CDw150; SLAM; IPO-3**Description:** Anti-SLAMF1 antibody(DMC445) IgG1 Chimeric Monoclonal Antibody**Background:** SLAMF1 (Signaling Lymphocytic Activation Molecule Family Member 1) is a Protein Coding gene. Diseases associated with SLAMF1 include Measles and Subacute Sclerosing Panencephalitis. Among its related pathways are Dendritic Cells Developmental Lineage Pathway and T Cell Co-Signaling Pathway: Ligand-Receptor Interactions. Gene Ontology (GO) annotations related to this gene include antigen binding. An important paralog of this gene is LY9.**Applications:** Flow Cyt**Recommended Dilutions:** Flow Cyt 1:100**Host Species:** Rabbit**Isotype:** Rabbit:Human Fc chimeric IgG1**Purification:** Purified from cell culture supernatant by affinity chromatography**Species Reactivity:** Human SLAMF1**Constituents:** Lyophilized from sterile PBS, pH 7.4. 5 % – 8% trehalose is added as protectants before lyophilization.**Storage & Shipping:** Store at -20°C to -80°C for 12 months in lyophilized form. After reconstitution, if not intended for use within a month, aliquot and store at -80°C (Avoid repeated freezing and thawing).

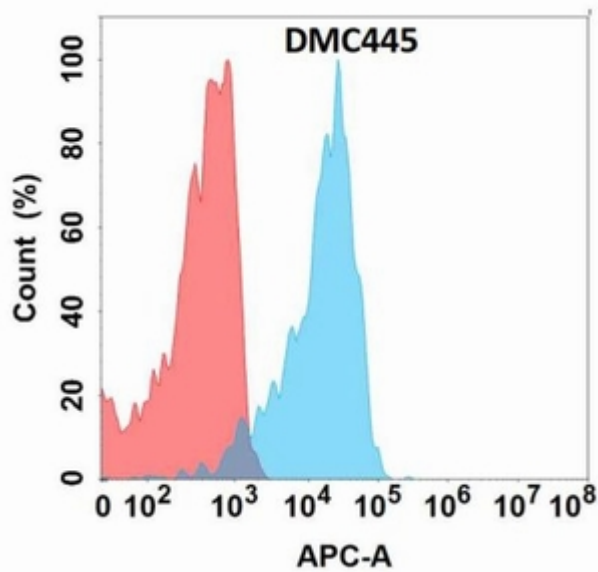


Figure 1. Flow cytometry analysis with Anti-SLAMF1 (DMC445) on Expi293 cells transfected with human SLAMF1 (Blue histogram) or Expi293 transfected with irrelevant protein (Red histogram).