

SLAMF5 (DMC286) IGG1 CHIMERIC MAB

Cat.#: 28194

Product Name: Anti-SLAMF5(DMC286) IgG1 Chimeric Monoclonal Antibody

Synonyms: CD84;SLAMF5;LY9B;SLAMF5

Description: Anti-SLAMF5 antibody(DMC286) IgG1 Chimeric Monoclonal Antibody

Background: This gene encodes a membrane glycoprotein that is a member of the signaling lymphocyte activation molecule (SLAM) family. This family forms a subset of the larger CD2 cell-surface receptor Ig superfamily. The encoded protein is a homophilic adhesion molecule that is expressed in numerous immune cells types and is involved in regulating receptor-mediated signaling in those cells. Alternate splicing results in multiple transcript variants.

Applications: Flow Cyt

Recommended Dilutions: Flow Cyt 1:100

Host Species: Rabbit

Isotype: Rabbit:Human Fc chimeric IgG1

Purification: Purified from cell culture supernatant by affinity chromatography

Species Reactivity: Human SLAMF5

Constituents: Lyophilized from sterile PBS, pH 7.4. 5 % – 8% trehalose is added as protectants before lyophilization.

Storage & Shipping: Store at -20°C to -80°C for 12 months in lyophilized form. After reconstitution, if not intended for use within a month, aliquot and store at -80°C (Avoid repeated freezing and thawing).

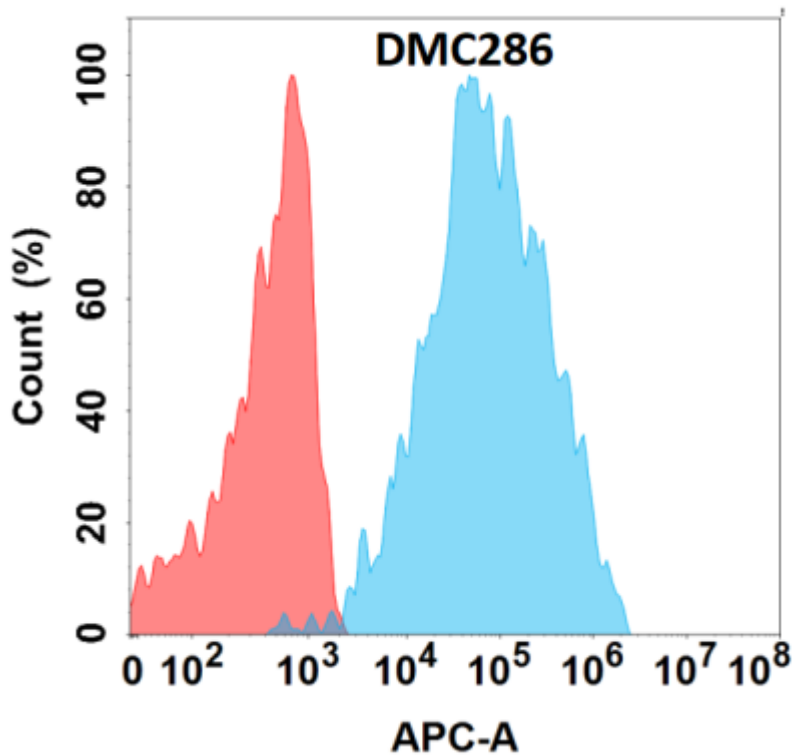


Figure 1. Flow cytometry analysis with Anti-SLAMF5 (DMC286) on Expi293 cells transfected with human SLAMF5 (Blue histogram) or Expi293 transfected with irrelevant protein (Red histogram).