

SLC7A5 PAB**SLC7A5 Polyclonal Antibody****Cat. #:** 21118**Gene Symbol:** SLC7A5**Description:** Anti-SLC7A5 Rabbit Polyclonal Antibody**Background:** Solute carrier family 7 member 5 (also known as large neutral amino acids transporter small subunit 1) is a protein encoded by the SLC7A5 gene in human. SLC7A5 plays a role in neuronal cell proliferation, is involved in the uptake of methylmercury (MeHg) and plays a role in metal ion homeostasis and toxicity.**Immunogen:** A synthetic peptide from the internal region of SLC7A5 of human origin.**Applications:** ELISA, WB, IHC, IP**Recommended Dilutions:**

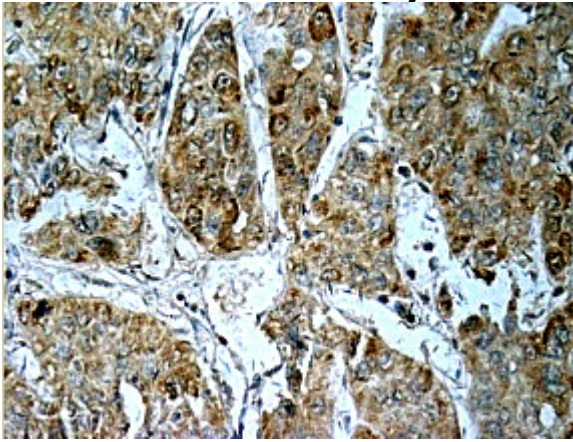
ELISA: 1:100–1:5000

WB: 1:100–1:2000

IHC: 1:50–1:100

Concentration: 0.25 mg/ml**Host Species:** Rabbit**Format:** Liquid**Clonality:** Polyclonal**Isotype:** IgG**Purity:** Purified from serum**Preservative:** No**Constituents:** PBS (without Mg^{2+} and Ca^{2+}), pH 7.4, 150 mM NaCl, 50% glycerol**Species Reactivity:** Anti-SLC7A5 antibody recognizes SLC7A5 of vertebrates.**Storage Conditions:** Store at $-20^{\circ}C$. Avoid repeated freezing and thawing

Immunohistochemistry:



Western blot analysis of Ric-8A proteins.

Whole-cell lysate of HeLa cells was blotted with Anti-Ric-8A monoclonal antibody (Cat. #26071).