

SMAD4 MAB

SMAD4 Monoclonal Antibody

Cat. #: 26453

Gene Symbol: SMAD4, DPC4, JIP, MADH4, MYHRS

Description: Anti-SMAD4 Mouse Monoclonal Antibody

Background: SMAD4 family member 4, also known as SMAD4, is a protein that in human is encoded by the SMAD4 gene. It is often found mutated in many cancers. It acts as a tumor suppressor that functions in the regulation of the TGF- β signal transduction pathway, which negatively regulates growth of epithelial cells and the extracellular matrix (ECM). SMAD4 alterations have been found in multiploid colorectal cancer and pancreatic carcinoma. It is found inactivated in at least 50% of pancreatic cancers. It is also found mutated in the autosomal dominant disease juvenile polyposis syndrome (JPS).

Immunogen: Purified SMAD4 protein, human origin. .

Applications: ELISA, WB, IHC

Recommended Dilutions:

ELISA: 1:1000-1:2000

WB: 1:500-1:1000

IHC: 1:50-1:100

Concentration: 1 mg/ml

Host Species: Mouse

Format: Liquid

Clonality: Monoclonal

Isotype: IgG

Purity: Purified from ascites

Preservative: No

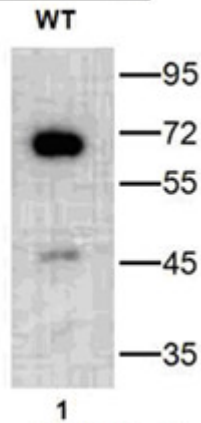
Constituents: PBS (without Mg²⁺ and Ca²⁺), pH 7.4, 150 mM NaCl, 50% glycerol

Species Reactivity: Recognizes SMAD4 of vertebrates.

Storage Conditions: Store at -20°C. Avoid repeated freezing and thawing

Western blot:

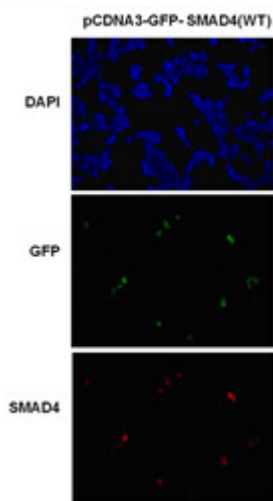
SMAD4 protein



WB: anti-SMAD4 mAb

Western blot analysis of recombinant SMAD4 protein. Purified His-tagged SMAD4 protein (1-552aa, 65kd) and was blotted with anti-SMAD4 monoclonal antibody (Cat. #26453).

Immunofluorescence:



Immunofluorescence of cells expressing SMAD4 proteins with anti SMAD4 antibody. HEK293T cells were transfected with pCDNA3-GFP-SMAD4 (WT) plasmid, then fixed and stained with anti SMAD4 monoclonal antibody (Cat. #26453).