

SMO(A68V)

SMO(A68V)

Cat. #: 26425

Size: 100 µL

Gene Symbol: SMO; MRD21

Description: Anti-SMO(A68V) Mouse Monoclonal Antibody

Background: Smoothed is a protein that in humans is encoded by the SMO gene. Smoothed is a G protein-coupled receptor that is a component of the hedgehog signaling pathway and is conserved from flies to humans. It is the molecular target of the teratogen cyclopamine. SMO can function as an oncogene. Activating SMO mutations can lead to unregulated activation of the hedgehog pathway and cancer

Immunogen: A synthetic peptide from the internal region of SMO which includes the mutation of A68V, human origin.

Applications: ELISA, WB, IHC

Recommended Dilutions:

ELISA: 1:1000-1:5000

WB: 1:500-1:1000

IHC: 1:50-1:100

Concentration: 1 mg/ml

Host Species: Mouse

Format: Liquid

Clonality: Monoclonal

Isotype: IgG

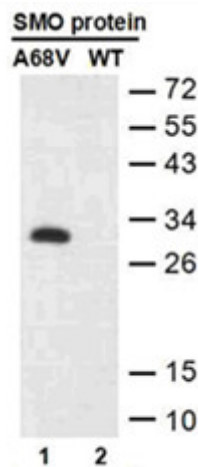
Purity: Purified from ascites

Preservative: No

Constituents: PBS (without Mg²⁺ and Ca²⁺), pH 7.4, 150 mM NaCl, 50% glycerol

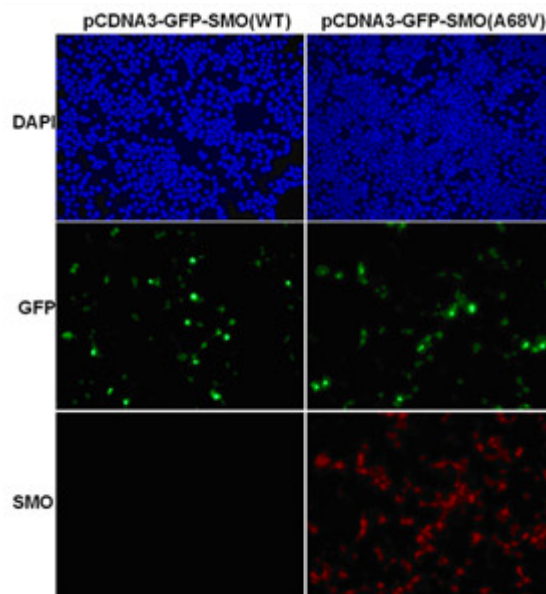
Species Reactivity: Recognizes A68V mutant, but not wild type SMO of vertebrates.

Storage Conditions: Store at -20°C. Avoid repeated freezing and thawing



Western blot: WB: anti-SMO (A68V) mAb

Western blot analysis of recombinant SMO(A68V) and wild type proteins. Purified His-tagged SMO(A68V) protein (lane 1) and corresponding wild type protein (lane 2) were blotted with Anti-SMO(A68V) monoclonal antibody (Cat. #26425).



Immunofluorescence:

Immunofluorescence of cells expressing SMO proteins with Anti-SMO(A68V) antibody. HEK293T cells were transfected with pCDNA3-GFP-SMO (WT) plasmid (left column) or pCDNA3-GFP-SMO(A68V) plasmid (right column), then fixed and stained with Anti-SMO(A68V) monoclonal antibody (Cat. #26425).