

STK11 MAB**STK11 Antibody****Cat. #:** 26158**Size:** 100 µL**Gene Symbol:** STK11, LKB1, PJS, hLKB1**Description:** Anti-STK11 Mouse Monoclonal Antibody

Background: Serine/threonine kinase 11 (STK11) also known as liver kinase B1 (LKB1) or renal carcinoma antigen NY-REN-19 is a kinase that controls the activity of AMP-activated protein kinase (AMPK) family members, thereby playing a role in various processes such as cell metabolism, cell polarity, apoptosis and DNA damage response, and functions as a tumour suppressor. Recent studies have uncovered a large number of somatic mutations of the STK11 gene that are present in lung, cervical, breast, intestinal, testicular, pancreatic and skin cancer.

Immunogen: A synthetic peptide from the internal region of STK, which includes the mutation of P281L, human origin.

Applications: ELISA, WB, IHC

Recommended Dilutions:

ELISA: 1:1000–1:5000

WB: 1:100–1:1000

IHC: 1:50–1:200

Concentration: 0.5 mg/ml

Host Species: Mouse

Format: Liquid

Clonality: Monoclonal

Isotype: IgG

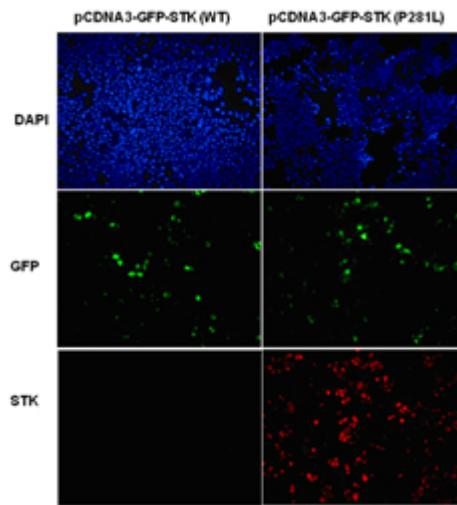
Purity: Purified from ascites

Preservative: No

Constituents: PBS (without Mg^{2+} and Ca^{2+}), pH 7.4, 150 mM NaCl, 50% glycerol

Species Reactivity: Recognizes P281L mutated, but not wild type STK11 of vertebrates.

Storage Conditions: Store at $-20^{\circ}C$. Avoid repeated freezing and thawing



Immunofluorescence:

Immunofluorescence of cells expressing STK11 proteins with Anti-STK11 (P281L) antibody. HEK293T cells were transfected with pCDNA3-GFP-STK11 (WT) plasmid (left column) or pCDNA3-GFP-STK11 (P281L) plasmid (right column), then fixed and stained with Anti-STK11 (P281L) monoclonal antibody (Cat. #26158).