

## Product Description

### SUMO-1 PAB

#### SUMO-1 Polyclonal Antibody

**Cat. #:** 21236

**Gene Symbol:** SUMO1

**Description:** Anti-SUMO-1 Rabbit polyclonal Antibody

**Background:** Small Ubiquitin-like Modifier or SUMO proteins are a family of small proteins that are covalently attached to and detached from other proteins in cells to modify their function. SUMOylation is a post-translational modification involved in various cellular processes, such as nuclear-cytosolic transport, transcriptional regulation, apoptosis, protein stability, response to stress, and progression through the cell cycle. There are 3 confirmed SUMO isoforms in humans: SUMO-1, SUMO-2 and SUMO-3. SUMO-2 and -3 show a high degree of similarity to each other and are distinct from SUMO-1.

**Immunogen:** A synthetic peptide corresponding to residues near the C-terminal of human SUMO-1.

**Applications:** ELISA, WB, IHC, IP

**Recommended Dilutions:**

ELISA: 1:1000-1:5000

WB: 1:100-1:1000

IHC: 1:50-1:100

**Concentration:** 1 mg/ml

**Host Species:** Rabbit

**Format:** Liquid

**Clonality:** Polyclonal

**Isotype:** IgG

**Purity:** Purified from serum

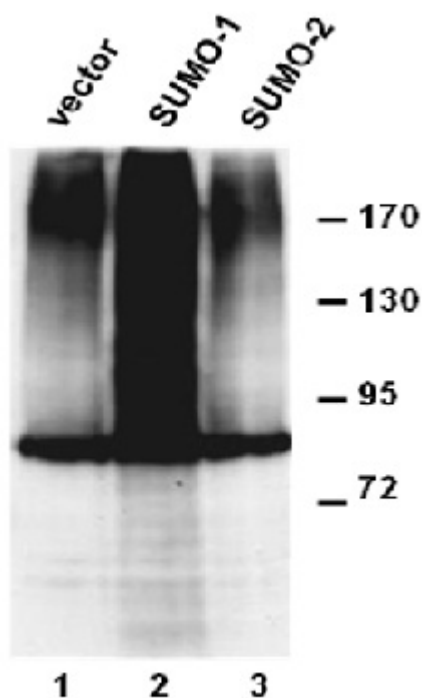
**Preservative:** No

**Constituents:** PBS (without  $Mg^{2+}$  and  $Ca^{2+}$ ), pH 7.4, 150 mM NaCl, 50% glycerol

**Species Reactivity:** Detects SUMO-1 but not SUMO-2/3 from vertebrates.

**Storage Conditions:** Store at  $-20^{\circ}C$ . Avoid repeated freezing and thawing

## Western blot:



WB:anti-SUMO-1 pAb

### Western blot analysis of over-expressed SUMO-1 proteins.

HEK293 cells were transfected with SUMO-1 (lane 2) and SUMO-2 (lane 3) cDNAs and control empty vector (lane 1). Cell lysates were blotted with Anti-SUMO-1 rabbit polyclonal antibody (Cat. # 21236).