

ALPP MAB (TCRCURE A06 MAB)

Cat.#: 28158

Product Name: Anti-ALPP(TCRCure A06) Monoclonal Antibody

Synonyms: PLAP-1;PLAP

Description: Anti-ALPP(TCRCure A06) Monoclonal Antibody

Background: Research grade biosimilar. Not for use in therapeutic or diagnostic procedures for humans or animals.

Applications: ELISA, Flow Cyt

Recommended Dilutions: ELISA 1:5000-10000, Flow Cyt 1:100

Host Species: Humanized

Isotype: IgG1

Purification: Purified from cell culture supernatant by affinity chromatography

Species Reactivity: Human ALPP

Constituents: Lyophilized from sterile PBS, pH 7.4. 5 % – 8% trehalose is added as protectants before lyophilization.

Storage & Shipping: Store at -20°C to -80°C for 12 months in lyophilized form. After reconstitution, if not intended for use within a month, aliquot and store at -80°C (Avoid repeated freezing and thawing).

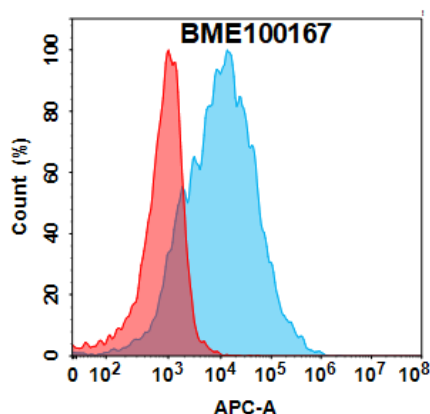


Figure 1. Flow cytometry analysis with 1µg/mL Anti-ALPP(TCRCure A06 Biosimilar) mAb (28158) on Expi293 cells transfected with Human ALPP protein (Blue histogram) or Expi293 transfected with irrelevant protein (Red histogram).

Anti-ALPP(TCRCure A06 Biosimilar)mAb ELISA

0.2 µg of Human ALPP, His tagged protein per well

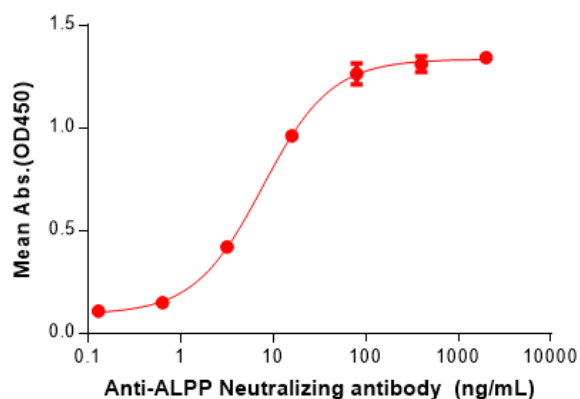


Figure 2. ELISA plate pre-coated by 2 µg/mL (100 µl/well) Human ALPP Protein, His Tag (11900) can bind Anti-ALPP(TCRCure A06 Biosimilar) mAb (28158) in a linear range of 3.20-80 ng/mL.