

TSLP MAB (TEZPELUMAB)

Cat.#: 28110

Product Name: Anti-TSLP(Tezepelumab) Monoclonal Antibody

Synonyms: Thymic stromal lymphopoietin

Description: Anti-TSLP(tezepelumab) Monoclonal Antibody

Background: Research grade biosimilar. Not for use in therapeutic or diagnostic procedures for humans or animals.

Applications: ELISA; Flow Cyt

Recommended Dilutions: ELISA 1:5000-10000; Flow Cyt 1:100

Host Species: Homo sapiens

Isotype: IgG2

Purification: Purified from cell culture supernatant by affinity chromatography

Species Reactivity: Human TSLP

Constituents: Lyophilized from sterile PBS, pH 7.4. 5 % – 8% trehalose is added as protectants before lyophilization.

Storage & Shipping: Store at -20°C to -80°C for 12 months in lyophilized form. After reconstitution, if not intended for use within a month, aliquot and store at -80°C (Avoid repeated freezing and thawing).

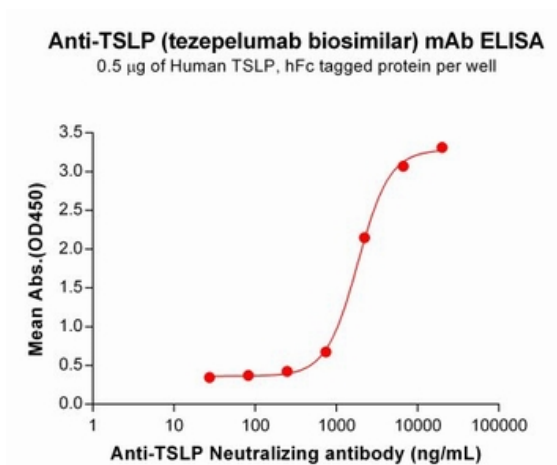


Figure 1. ELISA plate pre-coated by $5\ \mu\text{g}/\text{mL}$ ($100\ \mu\text{l}/\text{well}$) Human TSLP Protein, hFc Tag (11433) can bind Anti-TSLP Neutralizing antibody (28110) in a linear range of 741-6667 ng/mL. In order to specifically detect 28110, mouse anti-human Fab-specific antibody was used as detection antibody.

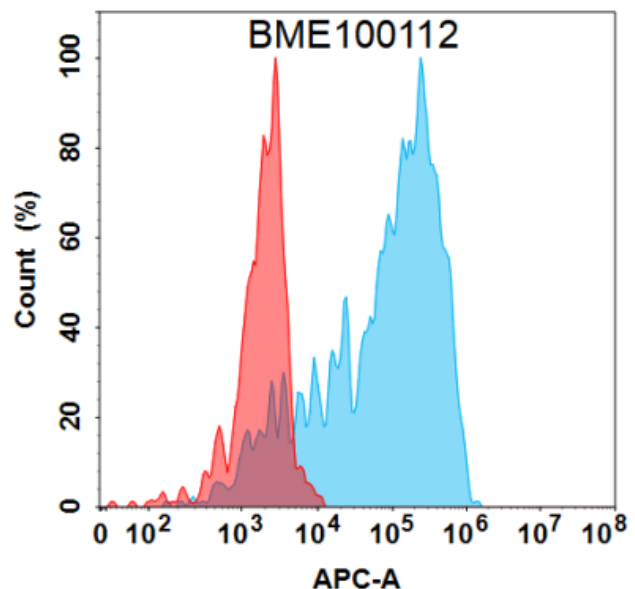


Figure 2. Flow cytometry analysis under cell membrane permeable condition with $1\ \mu\text{g}/\text{mL}$ Anti-TSLP (tezepelumab biosimilar) mAb (28110) on Expi293 cells transfected with Human TSLP protein (Blue histogram) or Expi293 transfected with irrelevant protein (Red histogram).



Product Description

Pioneering GTPase and Oncogene Product Development since 2010
