

TP53 PAB

TP53 Polyclonal Antibody

Cat. #: 21270

Gene Symbol: TP53

Description: Anti-TP53 Rabbit Polyclonal Antibody

Background: TP53 belongs to the p53 proteins family. It is ubiquitously expressed, acts as a tumor suppressor in many tumor types and induces growth arrest or apoptosis depending on the physiological circumstances and cell type. Defects in TP53 are a cause of esophageal cancer (ESCR), lung cancer (LNCR), adrenocortical carcinoma (ADCC), choroid plexus papilloma (CPLPA) and so on.

Immunogen: A synthetic peptide from the internal region of TP53 protein, human origin.

Applications: ELISA, WB, IHC

Recommended Dilutions:

ELISA 1:500–1:5000

WB 1:500–1:2000

IHC 1:50–200

Concentration: 0.2 mg/ml

Host Species: Rabbit

Format: Liquid

Clonality: Polyclonal

Isotype:

Purity: Purified from serum

Preservative: No

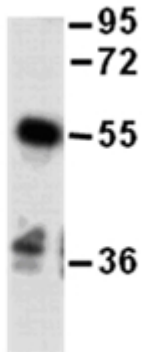
Constituents: PBS (without Mg^{2+} and Ca^{2+}), pH 7.4, 150 mM NaCl, 50% glycerol

Species Reactivity: Anti-TP53 rabbit polyclonal antibody recognizes TP53 from vertebrates.

Storage Conditions: Store at $-20^{\circ}C$. Avoid repeated freezing and thawing

Western blot:

TP53 protein



WB: Anti-TP53 pAb

Western blot analysis of recombinant TP53 protein. Purified full length His-tagged TP53 protein was blotted with anti TP53 rabbit anti-TP53 rabbit polyclonal antibody (Cat. #21270).