

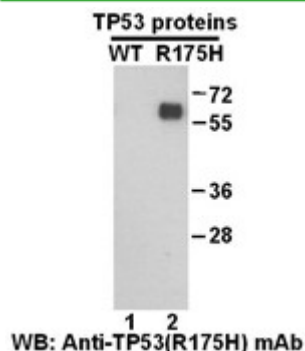
**TP53(R175H)****TP53(R175H)****Cat. #:** 26072**Gene Symbol:** TP53(R175H)**Description:** Anti-TP53(R175H) Mouse Monoclonal Antibody**Background:** TP53 belongs to the p53 proteins family. It is ubiquitously expressed, acts as a tumor suppressor in many tumor types and induces growth arrest or apoptosis depending on the physiological circumstances and cell type. Defects in TP53 are a cause of esophageal cancer (ESCR), lung cancer (LNCR), adrenocortical carcinoma (ADCC), choroid plexus papilloma (CPLPA) and so on.**Immunogen:** A synthetic peptide from the internal region of TP53 which includes the mutation of R175H, human origin**Applications:** ELISA, WB, IF, IHC**Recommended Dilutions:**

ELISA: 1:1000–1:5000

WB: 1:1000–1:5000

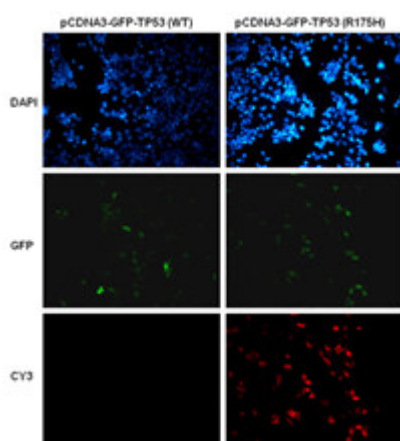
IHC: 1:50–1:100

**Concentration:** 1 mg/ml**Host Species:** Mouse**Format:** Liquid**Clonality:** Monoclonal**Isotype:****Purity:** Purified from ascites**Preservative:** No**Constituents:** PBS (without  $Mg^{2+}$  and  $Ca^{2+}$ ), pH 7.4, 150 mM NaCl, 50% glycerol**Species Reactivity:** Anti-TP53(R175H) antibody recognizes TP53(R175H) of vertebrates.**Storage Conditions:** Store at  $-20^{\circ}C$ . Avoid repeated freezing and thawing.**Western blot:**



Western blot analysis of recombinant TP53(R175H) and wild type proteins. Purified His-tagged TP53(R175H) protein (Cat.#10207) and wild type protein (Cat.#10202) were blotted with Anti-TP53(R175H) monoclonal antibody (Cat.# 26072).

## Immunofluorescence:



Immunofluorescence of cells expressing TP53 proteins with anti-TP53(R175H) antibody. HEK293T cells were transfected with pCDNA3-GFP-TP53 (WT) plasmid (left column) or pCDNA3-GFP-TP53(R175H) plasmid (right column), then fixed and stained with anti-TP53(R175H) monoclonal antibody (Cat. # 26072).