

## TP53(R282W)

### TP53(R282W)

**Cat. #:** 26076

**Gene Symbol:** TP53

**Description:** Anti-TP53(R282W) Mouse Monoclonal Antibody

**Background:** p53 protein acts as a tumor suppressor in many tumor types and induces growth arrest or apoptosis depending on the physiological circumstances and cell type. Defects in TP53 are found in many types of cancers.

**Immunogen:** Recombinant p53(R282W) protein, human origin.

**Applications:** ELISA, WB, IHC, IP

**Recommended Dilutions:**

ELISA: 1:1000-1:5000

WB: 1:1000-1:5000

IHC: 1:50-1:100

**Concentration:** 1 mg/ml

**Host Species:** Mouse

**Format:** Liquid

**Clonality:** Monoclonal

**Isotype:** IgG1

**Purity:** Purified from ascites

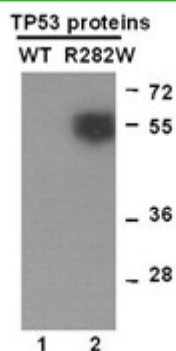
**Preservative:** No

**Constituents:** PBS (without Mg<sup>2+</sup> and Ca<sup>2+</sup>), pH 7.4, 150 mM NaCl, 50% glycerol

**Species Reactivity:** Anti-TP53(R282W) antibody recognizes TP53(R282W) of vertebrates.

**Storage Conditions:** Store at -20°C. Avoid repeated freezing and thawing

### Western blot:

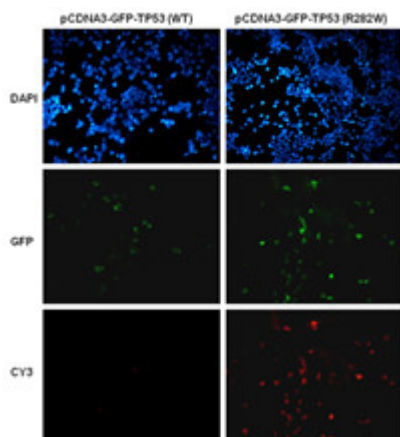


WB: Anti-TP53(R282W) mAb

Western blot analysis of recombinant TP53(R282W) and wild type p53 proteins.

Purified His-tagged TP53(R282W) protein (lane 2, Cat.#10204) and wild type p53 protein (lane 1, Cat.#10202) were blotted with anti TP53(R282W) mouse monoclonal antibody (Cat. # 26076).

## Immunofluorescence:



Immunofluorescence of cells expressing TP53 proteins with anti-TP53 (R282W) antibody.

HEK293T cells were transfected with pCDNA3-GFP-TP53 (WT) plasmid (left column) or pCDNA3-GFP-TP53(R282W) plasmid (right column), then fixed and stained with anti- TP53 (R282W) monoclonal antibody (Cat. # 26076).