

**TP53(R282W) PAB****TP53(R282W) Polyclonal Antibody**

**Cat. #:** 21165

**Gene Symbol:** TP53

**Description:** Anti-TP53(R282W) Rabbit Polyclonal Antibody

**Background:** p53 protein acts as a tumor suppressor in many tumor types and induces growth arrest or apoptosis depending on the physiological circumstances and cell type. Defects in TP53 are found in many types of cancers.

**Immunogen:** A synthetic peptide near the C-terminus of human TP53 which includes the mutation of R282W.

**Applications:** ELISA, WB, IHC, IF

**Recommended Dilutions:**

ELISA: 1:1000–1:5000

WB: 1:1000–1:5000

IHC: 1:100–1:1000

**Concentration:** 0.1 mg/ml

**Host Species:** Rabbit

**Format:** Liquid

**Clonality:** Polyclonal

**Isotype:**

**Purity:** Purified from serum

**Preservative:** No

**Constituents:** PBS (without  $Mg^{2+}$  and  $Ca^{2+}$ ), pH 7.4, 150 mM NaCl, 50% glycerol

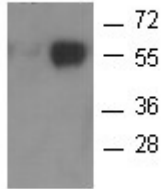
**Species Reactivity:** Anti-TP53(R282W) antibody recognizes TP53(R282W) of vertebrates.

**Storage Conditions:** Store at  $-20^{\circ}C$ . Avoid repeated freezing and thawing.

**Western blot:**

TP53 protein

WT R282W



WB: Anti-TP53(R282W) pAb

Western blot analysis of recombinant TP53(R282W) and wild type proteins. Purified His-tagged TP53(R282W) protein( Cat.# 10204) and wild type protein (Cat. # 10202) were blotted with Anti-TP53(R282W) rabbit antibody (Cat. # 21165).