

## TREM2 (DMC223) IGG1 CHIMERIC MAB

**Cat.#:** 28172

**Product Name:** Anti-TREM2(DMC223) IgG1 Chimeric Monoclonal Antibody

**Synonyms:** PLOSL2; TREM-2; Trem2a; Trem2b; Trem2c

**Description:** Anti-TREM2 antibody(DMC223) IgG1 Chimeric Monoclonal Antibody

**Background:** This gene encodes a membrane protein that forms a receptor signaling complex with the TYRO protein tyrosine kinase binding protein. The encoded protein functions in immune response and may be involved in chronic inflammation by triggering the production of constitutive inflammatory cytokines. Defects in this gene are a cause of polycystic lipomembranous osteodysplasia with sclerosing leukoencephalopathy (PLOSL). Alternative splicing results in multiple transcript variants encoding different isoforms.

**Applications:** ELISA; Flow Cyt

**Recommended Dilutions:** ELISA 1:5000-10000; Flow Cyt 1:100

**Host Species:** Rabbit

**Isotype:** Rabbit:Human Fc chimeric IgG1

**Purification:** Purified from cell culture supernatant by affinity chromatography

**Species Reactivity:** Human TREM2

**Constituents:** Lyophilized from sterile PBS, pH 7.4. 5 % – 8% trehalose is added as protectants before lyophilization.

**Storage & Shipping:** Store at -20°C to -80°C for 12 months in lyophilized form. After reconstitution, if not intended for use within a month, aliquot and store at -80°C (Avoid repeated freezing and thawing).

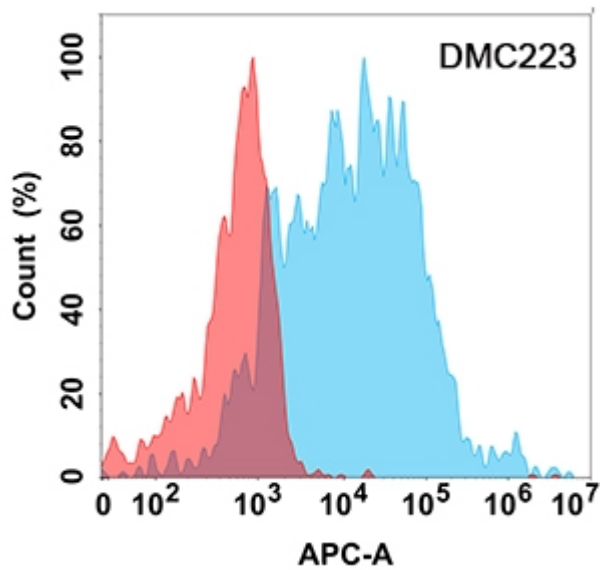


Figure 1. Flow cytometry analysis with Anti-TREM2 (DMC223) on Expi293 cells transfected with human TREM2 (Blue histogram) or Expi293 transfected with irrelevant protein (Red histogram).