

**TSLP (DMC426) IGG1 CHIMERIC MAB****Cat.#:** 28220**Product Name:** Anti-TSLP(DMC426) IgG1 Chimeric Monoclonal Antibody**Synonyms:** TSLP**Description:** Anti-TSLP antibody(DMC426) IgG1 Chimeric Monoclonal Antibody

**Background:** This gene encodes a hemopoietic cytokine proposed to signal through a heterodimeric receptor complex composed of the thymic stromal lymphopoietin receptor and the IL-7R alpha chain. It mainly impacts myeloid cells and induces the release of T cell-attracting chemokines from monocytes and enhances the maturation of CD11c( ) dendritic cells. The protein promotes T helper type 2 (TH2) cell responses that are associated with immunity in various inflammatory diseases; including asthma; allergic inflammation and chronic obstructive pulmonary disease. The protein is therefore considered a potential therapeutic target for the treatment of such diseases. In addition; the shorter (predominant) isoform is an antimicrobial protein; displaying antibacterial and antifungal activity against B. cereus; E. coli; E. faecalis; S. mitis; S. epidermidis; and C. albicans. Alternative splicing of this gene results in multiple transcript variants.

**Applications:** Flow Cyt**Recommended Dilutions:** Flow Cyt 1:100**Host Species:** Rabbit**Isotype:** Rabbit:Human Fc chimeric IgG1**Purification:** Purified from cell culture supernatant by affinity chromatography**Species Reactivity:** Human TSLP**Constituents:** Lyophilized from sterile PBS, pH 7.4. 5 % – 8% trehalose is added as protectants before lyophilization.**Storage & Shipping:** Store at -20°C to -80°C for 12 months in lyophilized form. After reconstitution, if not intended for use within a month, aliquot and store at -80°C (Avoid repeated freezing and thawing).

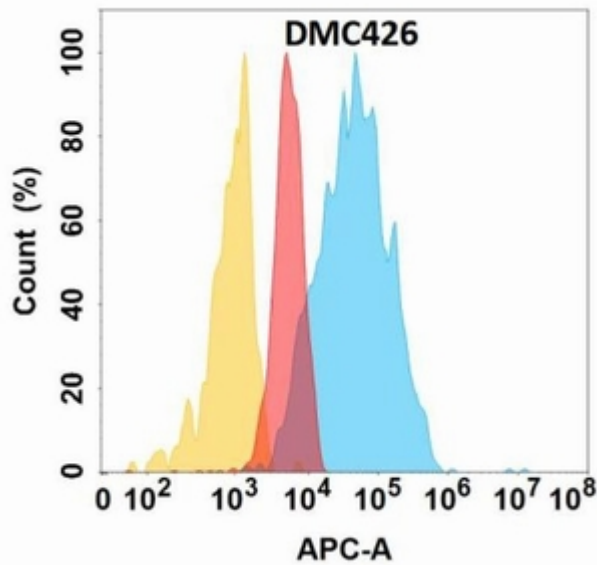


Figure 1. TSLP protein is highly expressed on the surface of Expi293 cell membrane. Flow cytometry analysis with Anti-TSLP (DMC426) on Expi293 cells transfected with human TSLP (Blue histogram) or Expi293 transfected with irrelevant protein (Red histogram), and Isotype antibody on Expi293 transfected with irrelevant protein (Orange histogram).